

**Discussion Draft**  
**PROPOSED COMPLIANCE OFFSET PROTOCOL**  
**MINE METHANE CAPTURE PROJECTS**

**Table of Contents**

Chapter 1: Purpose and Definitions..... 4

    § 1.1. Purpose. .... 4

    § 1.2. Definitions..... 5

Chapter 2: Eligible Activities – Quantification Methodology..... 12

    § 2.1. Active Underground Mine Ventilation Air Methane Activities. .... 13

    § 2.2. Active Underground Mine Methane Drainage Activities..... 14

    § 2.3. Active Surface Mine Methane Drainage Activities. .... 15

    § 2.4. Abandoned Underground Mine Methane Recovery Activities..... 16

Chapter 3. Eligibility..... 18

    § 3.1. General Eligibility Requirements..... 18

    § 3.2. Location. .... 19

    § 3.3. Offset Project Operator or Authorized Project Designee. .... 19

    § 3.4. Additionality. .... 20

        § 3.4.1. Legal Requirement Test..... 20

        § 3.4.2. Performance Standard Evaluation..... 20

    § 3.5. Methane Source Boundaries. .... 22

    § 3.6. Offset Project Commencement..... 23

    § 3.7. Project Crediting Period..... 23

    § 3.8. Regulatory Compliance. .... 23

Chapter 4. GHG Assessment Boundary – Quantification Methodology ..... 24

§ 4.1. Active Underground Mine VAM Activities. ....	24
Figure 4.1. Illustration of the greenhouse gas assessment boundary for active underground mine VAM activities.....	25
Table 4.1. List of the greenhouse gas sinks, sources, and reservoirs for active underground mine VAM activities.....	25
§ 4.2. Active Underground Mine Methane Drainage Activities.....	26
Figure 4.2. Illustration of the greenhouse gas assessment boundary for active underground mine methane drainage activities. ....	27
Table 4.2. List of identified greenhouse gas sinks, sources, and reservoirs for active underground mine methane drainage activities. ....	27
§ 4.3. Active Surface Mine Methane Drainage Activities. ....	29
Figure 4.3. Illustration of the greenhouse gas assessment boundary for active surface mine methane drainage activities. ....	29
Table 4.3. List of the greenhouse gas sinks, sources, and reservoirs for active surface mine methane drainage activities. ....	30
§ 4.4. Abandoned Underground Mine Methane Recovery Activities.....	31
Figure 4.4. Illustration of the greenhouse gas assessment boundary for abandoned underground mine methane recovery activities.....	32
Table 4.4. List of the greenhouse gas sinks, sources, and reservoirs for abandoned underground mine methane recovery activities.....	32
Chapter 5. Quantifying GHG Emission Reductions – Quantification Methodology.....	34
§ 5.1. Active Underground Ventilation Air Methane Activities. ....	34
§ 5.1.1. Quantifying Baseline Emissions .....	34
§ 5.1.2. Quantifying Project Emissions.....	37
§ 5.2. Active Underground Mine Methane Drainage Activities.....	41
§ 5.2.1. Quantifying Baseline Emissions. ....	42
§ 5.2.2. Quantifying Project Emissions.....	47

§ 5.3. Active Surface Mine Methane Drainage Activities. ....	51
§ 5.3.1. Quantifying Baseline Emissions. ....	52
§ 5.3.2 Quantifying Project Emissions. ....	60
§ 5.4. Abandoned Underground Mine Methane Recovery Activities. ....	65
§ 5.4.1 Quantifying Baseline Emissions. ....	66
§ 5.4.2. Quantifying Project Emissions. ....	71
Chapter 6. Monitoring. ....	76
§ 6.1. General Monitoring Requirements. ....	76
§ 6.2. Instrument QA/QC. ....	77
§ 6.3. Document Retention. ....	78
§ 6.4. Active Underground Mine Ventilation Air Methane Activities. ....	80
Table 6.1. Active Underground Mine VAM Activity Monitoring Parameters – Quantification Methodology. ....	80
§ 6.5. Active Underground Mine Methane Drainage Activities. ....	83
Table 6.2. Active Underground Mine Methane Drainage Activity Monitoring Parameters – Quantification Methodology ....	84
§ 6.6. Active Surface Mine Methane Drainage Activities. ....	88
Table 6.3. Active Surface Mine Methane Drainage Activity Monitoring Parameters – Quantification Methodology. ....	90
§ 6.7. Abandoned Underground Mine Methane Recovery Activities. ....	101
Table 6.4. Abandoned Underground Mine Methane Recovery Activity Monitoring Parameters – Quantification Methodology ....	102
Chapter 7. Reporting. ....	106
§ 7.1. Listing Requirements. ....	107
§ 7.2. Offset Project Data Report. ....	113
Chapter 8. Verification. ....	116

Appendix A. Emission Factors – Quantification Methodology .....	117
Table A.1 CO <sub>2</sub> Emission Factors for Fossil Fuel Use.....	117
Table A.2 Emissions & Generation Resource Integrated Database (eGRID) Table .....	120
Appendix B. Device Destruction Efficiencies – Quantification Methodology.....	121
Table B.1 Default Destruction Efficiencies by Destruction Device.....	121
Appendix C. Data Substitution Methodology – Quantification Methodology.....	122

**Chapter 1: Purpose and Definitions**

**§ 1.1. Purpose.**

- (a) The purpose of the Compliance Offset Protocol Mine Methane Capture Projects (protocol) is to quantify greenhouse gas (GHG) emission reductions associated with the capture and destruction of methane (CH<sub>4</sub>) that would otherwise be vented into the atmosphere as a result of mining operations at active underground and surface coal and trona mines and abandoned underground coal mines.
- (b) AB 32 exempts quantification methodologies from the Administrative Procedure Act (APA);<sup>1</sup> however those elements of the protocol are still regulatory. The exemption allows future updates to the quantification methodologies to be made through a public review and Board adoption process but without the need for rulemaking documents. Each protocol identifies sections that are considered quantification methodologies and exempt from APA requirements. Any changes to the non-quantification elements of the offset protocols would be considered a regulatory update subject to the full regulatory development process. Those sections that are considered to be a quantification methodology are clearly indicated in the title of the chapter or subchapter if only a portion of that chapter is considered part of the quantification methodology of the protocol.

---

<sup>1</sup> Health and Safety Code section 38571

## § 1.2. Definitions.

- (a) For the purposes of this protocol, the following definitions apply:
- (1) “Abandoned Underground Mine” means a mine where all mining activity including mine development and mineral production has ceased, mine personnel are not present in the mine workings, and mine ventilation fans are no longer operative. A mine must be classified by the Mine Safety and Health Administration (MSHA) as abandoned or temporarily idle in order to be eligible for an abandoned mine methane recovery activity.
  - (2) “Abandoned Mine Methane” or “AMM” means methane released from an abandoned mine.
  - (3) “Accuracy” means the closeness of the agreement between the result of the measurement and the true value of the particular quantity (or a reference value determined empirically using internationally accepted and traceable calibration materials and standard method), taking into account both random and systematic factors.
  - (4) “Active Surface Mine” means a permitted mine in which the mineral lies near the surface and can be extracted by removing the covering layers of rock and soil. A mine must be classified by the Mine Safety and Health Administration (MSHA) as active or intermittent in order to be eligible for an active surface mine methane drainage activity.
  - (5) “Active Underground Mine” means a permitted mine usually located several hundred feet below the earth’s surface. A mine must be classified by the Mine Safety and Health Administration (MSHA) as active or intermittent in order to be eligible for an active underground mine methane drainage or ventilation air methane activity.
  - (6) “ASTM” means the American Society of Testing and Materials.
  - (7) “Basin” means geological provinces as defined by the American Association of Petroleum Geologists (AAPG) Geologic Note: AAPG-CSD Geological Provinces Code Map: AAPG Bulletin, Prepared by Richard F. Meyer, Laurie G. Wallace, and Fred J. Wagner, Jr., Volume 75, Number 10 (October 1991), which is hereby incorporated by reference.

- (8) “Boiler” means a closed vessel or arrangement of vessels and tubes, together with a furnace or other heat source, in which water is heated to produce hot water or steam.
- (9) “Cap-and-Trade Regulation” or “Regulation” or “Cap-and-Trade Program” means ARB’s regulation establishing the California Cap on Greenhouse Gas Emissions and Market-Based Compliance Mechanisms set forth in title 17, California Code of Regulations, Chapter 1, Subchapter 10, article 5 (commencing with section 95800).
- (10) “Coal” means all solid fuels classified as anthracite, bituminous, sub-bituminous, or lignite by the American Society for Testing and Materials Designation ASTM D388-05 “Standard Classification of Coals by Rank” (2005), which is hereby incorporated by reference.
- (11) “Coal Bed Methane” or “CBM” or “Virgin Coal Bed Methane” means, for purposes of this protocol, methane-rich natural gas drained from coal seams and surrounding strata not disturbed by mining. The extraction, capture, and destruction of coal bed methane are unrelated to mining activities and are not eligible under this protocol.
- (12) “Emission Factor” means a unique value for determining an amount of a GHG emitted for a given quantity of activity (e.g., metric tons of carbon dioxide emitted per barrel of fossil fuel burned).
- (13) “Flare” means a combustion device, whether at ground level or elevated, that uses an open flame to burn combustible gases with combustion air provided by uncontrolled ambient air around the flame.
- (14) “Flooded Mine” means a mine that is flooded, i.e. filled with water, as a result of the turning off of pumps at time of abandonment.
- (15) “Flow Meter” means a measurement device consisting of one or more individual components that is designed to measure the bulk fluid movement of liquid or gas through a piped system at a designated point. Bulk fluid movement can be measured with a variety of devices in units of mass flow or volume.

- (16) “Gas Enrichment” or “Enrichment” means the process of upgrading extracted mine gas to pipeline quality.
- (17) “Gas Processing” or “Processing” means applying techniques such as dehydration and separation to extracted mine gas to prepare it for an end-use management option.
- (18) “Gob” means the part of the mine from which the mineral and artificial supports have been removed and the roof allowed to fall in. Gob is also known as “Goaf.”
- (19) “Greenhouse Gas Assessment Boundary” or “GHG Assessment Boundary” or “Offset Project Boundary” is defined by and includes all GHG emission sources, GHG sinks or GHG reservoirs that are affected by an offset project and under control of the Offset Project Operator or Authorized Project Designee. GHG emissions sources, GHG sinks or GHG reservoirs not under control of the Offset Project Operator or Authorized Project Designee are not included in the offset project boundary.
- (20) “Methane Drainage System” or “Drainage System” means a system that drains methane from coal or trona seams and/or surrounding rock strata and transports it to a common collection point. Methane drainage systems may comprise multiple methane sources.
- (21) “Methane Source” means a methane source type (i.e., ventilation shafts, pre-mining surface wells, pre-mining in-mine boreholes, gob wells, existing coal bed methane wells that would otherwise be shut-in and abandoned, abandoned wells that are re-activated, and converted dewatering wells) in the aggregate. In this protocol, “methane source” does not refer to any specific shaft, borehole, or well, but instead refers to all the shafts, boreholes, and wells of the same type collectively.
- (22) “Mine Gas” or “MG” means the unprocessed gas extracted from within a mine through a methane drainage system that often contains various levels of other components (e.g. nitrogen, oxygen, carbon dioxide, hydrogen sulfide, NMHC, etc.).

- (23) “Mine Methane” or “MM” means methane contained in mineral deposits and surrounding strata that is released as a result of mining operations; the methane portion of mine gas.
- (24) “Mine Operator” means the operating entity listed on the state well drilling permit, or a state operating permit for wells where no drilling permit is issued by the state.
- (25) “Mine Safety and Health Administration” or “MSHA” means the U.S. federal agency which regulates mine health and safety.
- (26) “Mining Activities” means the working of an area, or panel, of coal or trona that has been developed and equipped to facilitate mineral extraction and is shown on a mining plan.
- (27) “Mountaintop Removal Mining” means a method of surface mining involving the removal of mountaintops to expose coal seams and disposal of the associated mining overburden in adjacent valleys. Projects which occur at mines that employ mountaintop removal mining are not eligible under this protocol.
- (28) “Natural Gas Pipeline” or “Pipeline” means a high pressure pipeline transporting saleable quality natural gas offsite to distribution, metering or regulating stations or directly to customers.
- (29) “Non-Qualifying Destruction Device” or “Non-Qualifying Device” means a destruction device that is either operational at the mine prior to offset project commencement or used to combust mine methane via an ineligible end-use management option per section 3.4.2. Methane destroyed by a non-qualifying device must be monitored for quantification of both the baseline and project scenarios.
- (30) “Offset Project Expansion” means the addition of a new methane source or new destruction device to an existing MMC project. A methane source is deemed new if it is either drilled after offset project commencement or connected to a destruction device after offset project commencement. A destruction device is deemed new if it becomes operational after offset project commencement. Under certain circumstances, described in



Chapter 2, the addition of new methane sources or new destruction devices may qualify as a new MMC project or an offset project expansion. In those cases, an Offset Project Operator may choose how to define the addition. Offset project expansion, unlike the establishment of a new MMC project, will not result in a new offset project commencement date or crediting period. Offset project expansion, unlike the establishment of a new MMC project, allows the Offset Project Operator to submit a single annual Offset Project Data Report (OPDR) and undergo a single annual verification.

- (31) “Oxidation” means a reaction in which the atoms in an element lose electrons and the valence of the element is correspondingly increased.
- (32) “Pre-mining In-mine Boreholes” means a borehole drilled into an unmined seam from within the mine to drain methane from the seam ahead of the advancement of mining. This is also known as horizontal pre-mining boreholes.
- (33) “Pre-mining Surface Wells” means a well drilled into an unmined seam from the surface to drain methane from the seam and surrounding strata, often months or years in advance of mining. This is also known as surface pre-mining boreholes, surface-to-seam boreholes, and surface-drilled directional boreholes.
- (34) “Post-mining Gob Well” or “Gob Well” means a well used to extract methane from the gob. Gob wells may be drilled from the surface or within the mine.
- (35) “Project Activity” means change in mine methane management that leads to a reduction in GHG emissions in comparison to the baseline management and GHG emissions.
- (36) “Qualifying Destruction Device” or “Qualifying Device” means a destruction device that was not operational at the mine prior to offset project commencement and that was not used to combust mine methane via an ineligible end-use management option per section 3.4.2. Methane

destroyed by a non-qualifying device must be monitored for quantification of both the baseline and project scenarios.

- (37) “Sealed,” in reference to an abandoned mine, means any entrances into the mine (e.g., ventilation shafts, methane drainage wells) have been sealed. The volume of methane trapped in the mine and the rate at which mine gas is emitted from the mine is dependent on the standard of the sealing.
- (38) “Shut-in” means to close, temporarily, a well capable of production.
- (39) “Standard Conditions” or “Standard Temperature and Pressure” or “STP” means 60 degrees Fahrenheit and 14.7 pounds per square inch absolute.
- (40) “Standard Cubic Foot” or “scf” is a measure of quantity of gas, equal to a cubic foot of volume at 60 degrees Fahrenheit and 14.7 pounds per square inch (1 atm) of pressure.
- (41) “Surface Mine Methane” or “SMM” means methane contained in mineral deposits and surrounding strata that is released as a result of surface mining operations.
- (42) “Thermal Energy” means the thermal output produced by a combustion source used directly as part of a manufacturing process, industrial/commercial process, or heating/cooling application, but not used to produce electricity.
- (43) “Trona” means a water-bearing sodium carbonate compound that is mined and processed into soda ash or bicarbonate of soda.
- (44) “Uncertainty” means the degree to which data or a data system is deemed to be indefinite or unreliable.
- (45) “Uncertainty Deduction” means a deduction applied to the emission reductions achieved by an abandoned mine methane recovery activity to account for uncertainty related to the use of emission rate decline curves in order to ensure that credited emission reductions remain conservative.
- (46) “Vented Emissions” means, for purposes of this protocol, intentional or designed releases of CH<sub>4</sub> containing natural gas or hydrocarbon gas through mine ventilation and methane drainage systems.

- (47) "Ventilation Air Methane" or "VAM" means methane contained in exhaust air of the ventilation system of a mine, which originates across the mine workings and is diluted to low concentrations by the circulation of outside air.
  - (48) "Ventilation Air Methane Collection System" or "VAM Collection System" means a system that captures the ventilation air methane from the ventilation system.
  - (49) "Ventilation System" means a system of fans that provides a flow of air to underground workings of a mine for the purpose of sufficiently diluting and removing methane and other noxious gases. "Venting," in reference to an abandoned mine, means that existing wells and ventilation shafts are left unsealed, allowing air into the mine and methane to escape freely to the atmosphere.
  - (50) "Well" means a well drilled for extraction of natural gas from a coal seam, surrounding strata, or mine.
- (b) For terms not defined in section 1.2(a), the definitions in the Regulation apply.
- (c) Acronyms. For the purposes of this protocol, the following acronyms apply:
- (1) "AAPG" means American Association of Petroleum Geologists.
  - (2) "AB 32" means Assembly Bill 32, the Global Warming Solutions Act of 2006.
  - (3) "AMM" means abandoned mine methane.
  - (4) "APA" means Administrative Procedure Act.
  - (5) "APD" means Authorized Project Designee.
  - (6) "ARB" means the California Air Resources Board.
  - (7) "atm" means atmosphere in reference to a unit of pressure.
  - (8) "BAU" means business as usual.
  - (9) "Btu" means British thermal unit.
  - (10) "CBM" means coal bed methane.
  - (11) "CH<sub>4</sub>" means methane.
  - (12) "CO<sub>2</sub>" means carbon dioxide.
  - (13) "CO<sub>2</sub>e" means carbon dioxide equivalent.

- (14) “F” means Fahrenheit.
- (15) “GHG” means greenhouse gas.
- (16) “GWP” means global warming potential.
- (17) “kg” means kilogram.
- (18) “lb” means pound.
- (19) “m” means minute.
- (20) “MG” means mine gas.
- (21) “MM” means mine methane.
- (22) “MMBtu” means million British thermal units.
- (23) “MMC” means mine methane capture.
- (24) “MRR” means Mandatory Reporting Regulation; the Regulation for the Mandatory Reporting of Greenhouse Gas Emissions.
- (25) “Mscf” means thousand standard cubic feet.
- (26) “MSHA” means Mine Safety and Health Administration.
- (27) “MWh” means megawatt hour.
- (28) “N<sub>2</sub>O” means nitrous oxide.
- (29) “OPDR” means Offset Project Development Report.
- (30) “OPO” means Offset Project Operator.
- (31) “R” means Rankine.
- (32) “scf” means standard cubic foot.
- (33) “scf/d” means standard cubic feet per day.
- (34) “scfm” means standard cubic feet per minute.
- (35) “SMM” mean surface mine methane.
- (36) “SSR” means GHG sources, sinks, and reservoirs.
- (37) “STP” means standard temperature and pressure.
- (38) “t” means metric ton.
- (39) “QA/QC” means quality assurance and quality control.
- (40) “VAM” means ventilation air methane.

## **Chapter 2: Eligible Activities – Quantification Methodology**

This protocol includes four mine methane capture activities designed to reduce GHG emissions that result from the mining process at active underground mines, active

surface mines, and abandoned underground mines. The following types of mine methane capture activities are eligible:

### **§ 2.1. Active Underground Mine Ventilation Air Methane Activities.**

This protocol applies to MMC projects that install a ventilation air methane (VAM) collection system and qualifying device to destroy the methane in VAM otherwise vented into the atmosphere through the return air shaft(s) as a result of underground coal or trona mining operations.

- (a) Ventilation shafts are the only methane source eligible for VAM activities.
- (b) In order to be considered a qualifying device for the purpose of this protocol, the device must not be operating at the mine prior to offset project commencement.
- (c) At active underground mines, an Offset Project Operator or Authorized Project Designee may operate both VAM and methane drainage activities as a single offset project all sharing the earliest commencement date. Alternatively, the Offset Project Operator or Authorized Project Designee may elect to operate separate offset projects for each activity with unique commencement dates.
- (d) If a newly constructed ventilation shaft is connected to an existing or new destruction device after offset project commencement, the Offset Project Operator may either classify it as an offset project expansion or register the addition as a new MMC project.
- (e) If an existing ventilation shaft that was not connected to a destruction device at time of offset project commencement is connected to an existing or new destruction device after offset project commencement, the Offset Project Operator may either classify it as an offset project expansion or register the addition as a new MMC project.
- (f) If a new qualifying destruction device is added to a ventilation shaft currently connected to an existing qualifying destruction device this addition of the new destruction device is considered an offset project expansion.
- (g) Ventilation air methane from any ventilation shaft connected to a non-qualifying destruction device at any point during the year prior to offset project commencement is not eligible for crediting.

## **§ 2.2. Active Underground Mine Methane Drainage Activities.**

This protocol applies to MMC projects that install equipment to capture and destroy methane extracted through a methane drainage system that would otherwise be vented into the atmosphere as a result of underground coal or trona mining operations.

- (a) Methane drainage systems must consist of one, or a combination of, the following methane sources that drain methane from the coal seam, surrounding strata, or underground workings of the mine before, during, and/or after mining:
  - (1) pre-mining surface wells;
  - (2) pre-mining in-mine boreholes; and
  - (3) post-mining gob wells.
- (b) In order to be considered a qualifying device for the purpose of this protocol, a methane destruction device for an active underground mine methane drainage activity must not be operating at the mine prior to offset project commencement and must represent an end-use management option other than natural gas pipeline injection.
- (c) At active underground mines, an Offset Project Operator or Authorized Project Designee may operate both VAM and methane drainage activities as a single project all sharing the earliest commencement date. Alternatively, the Offset Project Operator or Authorized Project Designee may elect to operate separate projects for each activity with unique commencement dates.
- (d) If a newly drilled well/borehole is connected to an existing or new qualifying destruction device after offset project commencement, the Offset Project Operator may either classify it as an offset project expansion or register the addition as a new MMC project.
- (e) If an existing well/borehole that was not connected to a destruction device at time of offset project commencement is connected to an existing or new destruction device after offset project commencement, the Offset Project Operator may either classify it as an offset project expansion or register the addition as a new MMC project.

- (f) If a new qualifying destruction device is connected to a well/borehole currently connected to an existing qualifying destruction device, this addition of the new destruction device is considered an offset project expansion.
- (g) Mine methane from any well or borehole connected to a non-qualifying destruction device at any point during the year prior to offset project commencement is not eligible for crediting.
- (h) Active underground mines with MMC projects must not:
  - (1) capture virgin coal bed methane (CBM) extracted from coal seams outside the extents of the mine according to the mine plan or from outside the methane source boundaries as described in section 3.5; or
  - (2) use CO<sub>2</sub>, steam, or any other fluid/gas to enhance mine methane drainage.

### **§ 2.3. Active Surface Mine Methane Drainage Activities.**

This protocol applies to MMC projects that install equipment to capture and destroy methane extracted through a methane drainage system that would otherwise be vented into the atmosphere as a result of surface coal or trona mining operations.

- (a) Methane drainage systems must consist of one, or a combination, of the following methane sources that drain methane from the coal seam or surrounding strata before and/or during mining:
  - (1) pre-mining surface wells;
  - (2) pre-mining in-mine boreholes;
  - (3) existing coal bed methane (CBM) wells that would otherwise be shut-in and abandoned as a result of encroaching mining;
  - (4) abandoned wells that are re-activated; and
  - (5) converted dewatering wells.
- (b) In order to be considered a qualifying device for the purpose of this protocol, a methane destruction device for an active surface mine methane drainage activity must not be operating at the mine prior to offset project commencement.
- (c) If a newly drilled well/borehole is connected to an existing or new qualifying destruction device after offset project commencement, the Offset Project

Operator may either classify it as an offset project expansion or register the addition as a new MMC project.

- (d) If an existing well/borehole that was not connected to a destruction device at time of offset project commencement is connected to an existing or new destruction device after offset project commencement, the Offset Project Operator may either classify it as an offset project expansion or register the addition as a new MMC project.
- (e) If a new qualifying destruction device is connected to a well/borehole currently connected to an existing qualifying destruction device, this addition of the new destruction device is considered an offset project expansion.
- (f) SMM from any well or borehole connected to a non-qualifying destruction device at any point during the year prior to offset project commencement is not eligible for crediting.
- (g) To be eligible for crediting under this protocol, MMC projects at active surface mines must not:
  - (1) capture virgin CBM extracted from wells outside the extents of the mine according to the mine plan or from outside the methane source boundaries as described in section 3.5; or
  - (2) use CO<sub>2</sub>, steam, or any other fluid/gas to enhance mine methane drainage; or
  - (3) occur at mines that employ mountaintop removal mining methods.

#### **§ 2.4. Abandoned Underground Mine Methane Recovery Activities.**

This protocol applies to MMC projects that install equipment to capture and destroy methane extracted through a methane drainage system that would otherwise be vented into the atmosphere as a result of previous underground coal mining operations.

- (a) Methane drainage systems must consist of one, or a combination of, the following methane sources:
  - (1) pre-mining surface wells, pre-mining in-mine boreholes, or post-mining gob wells drilled into the mine during active mining operations; and
  - (2) newly drilled surface wells.



- (b) In order to be considered a qualifying device for the purpose of this protocol, a methane destruction device for an abandoned underground mine methane recovery activity must not be operating at the mine prior to offset project commencement.
- (c) Abandoned underground mine methane recovery activities at multiple mines with multiple mine operators may report and verify together as a single project per the requirements of the Regulation if they meet the following criteria:
  - (1) A single Offset Project Operator is identified and emission reductions achieved by the project will be credited to that Offset Project Operator.
  - (2) The methane recovered from the mines is metered at a centralized point prior to being sent to a destruction device.
  - (3) The Offset Project Operator meets all monitoring, reporting and verification requirements in Chapters 6, 7, and 8.
  - (4) All mines are in compliance with regulations per section 3.8. If any mine is found to be out of compliance, no emission reductions will be credited to the project even if achieved by one of the other mines found to be in compliance.
- (d) In the event that there are vertically separated mines overlying and underlying other mines, wells completed in one mine can be used to capture methane in overlying or underlying mines provided the wells are within the maximum vertical extent of each mine per section 3.5(d)(4).
- (e) If a newly drilled well/borehole is connected to an existing or new qualifying destruction device after offset project commencement, the Offset Project Operator may either classify it as an offset project expansion or register the addition as a new MMC project.
- (f) If an existing well/borehole that was not connected to a destruction device at time of offset project commencement is connected to an existing or new destruction device after offset project commencement, the Offset Project Operator may either classify it as an offset project expansion or register the addition as a new MMC project.

- (g) If a new qualifying destruction device is connected to a well/borehole currently connected to an existing qualifying destruction device, this addition of the new destruction device is considered an offset project expansion.
- (h) AMM from any well or borehole connected to a non-qualifying destruction device at any point during the year prior to offset project commencement is not eligible for crediting.
- (i) To be eligible for crediting under this protocol, MMC projects at abandoned underground mines must not:
  - (1) capture virgin coal bed methane (CBM) from wells outside the extents of the mine according to the final mine map(s) or from outside the methane source boundaries ascribed in section 3.5; or
  - (2) use CO<sub>2</sub>, steam, or any other fluid/gas to enhance mine methane drainage; or
  - (3) occur at flooded mines.

### **Chapter 3. Eligibility**

In addition to the offset project eligibility criteria and regulatory program requirements set forth in the Cap-and-Trade Regulation (Regulation), mine methane capture offset projects must adhere to the eligibility requirements below.

#### **§ 3.1. General Eligibility Requirements.**

- (a) Offset projects that use this protocol must:
  - (1) involve the installation and operation of a device, or set of devices, associated with the capture and destruction of mine methane;
  - (2) capture mine methane that would otherwise be emitted to the atmosphere; and
  - (3) destroy the captured mine methane through an eligible end-use management option per section 3.4.
- (b) Offset Project Operators or Authorized Project Designees that use this protocol must:
  - (1) provide the listing information required in the Regulation and section 7.1;

- (2) monitor GHG emission sources within the GHG Assessment Boundary as delineated in Chapter 4 per the requirements of Chapter 6;
- (3) quantify GHG emission reductions per Chapter 5;
- (4) prepare and submit annual Offset Project Data Reports (OPDRs) that include the information requirements in section 7.2; and
- (5) undergo required, independent verification by an ARB-accredited offset verification body in accordance with the Regulation and Chapter 8.

### **§ 3.2. Location.**

- (a) Only projects located in the United States are eligible under this protocol.
- (b) Offset projects situated on the following categories of land are only eligible under this protocol if they meet the requirements of this protocol and the Regulation, including the waiver of sovereign immunity requirements of section 95975(l) of the Regulation:
  - 1) Land that is owned by, or subject to an ownership or possessory interest of a Tribe;
  - 2) Land that is “Indian lands” of a Tribe, as defined by 25 U.S.C. §81(a)(1); or
  - 3) Land that is owned by any person, entity, or Tribe, within the external borders of such Indian lands.
- (c) Projects must take place at either:
  - 1) an active underground or surface mine permitted for coal or trona mining by an appropriate state or federal agency and classified by Mine Safety and Health Administration (MSHA) as an active or intermittent mine; or
  - 2) an abandoned underground coal mine classified as temporarily abandoned or permanently abandoned by MSHA.
- (d) Mines located on federal lands are eligible for implementation of MMC projects.

### **§ 3.3. Offset Project Operator or Authorized Project Designee.**

- (a) The Offset Project Operator or Authorized Project Designee is responsible for project listing, monitoring, reporting, and verification.
- (b) The Offset Project Operator or Authorized Project Designee must submit the information in the Regulation and in Chapter 7.

- (c) The Offset Project Operator must have legal authority to implement the offset project.

### **§ 3.4. Additionality.**

Offset projects must meet the additionality requirements set out in the Regulation, in addition to the requirements in this protocol. Eligible offsets must be generated by projects that yield surplus GHG reductions that exceed any GHG reductions otherwise required by law or regulation or any GHG reduction that would otherwise occur in a conservative business-as-usual scenario. These requirements are assessed through the Legal Requirement Test in section 3.4.1 and the Performance Standard Evaluation in section 3.4.2.

#### **§ 3.4.1. Legal Requirement Test.**

- (a) Emission reductions achieved by an MMC project must exceed those required by any law, regulation, or legally binding mandate at the time of offset project commencement.
- (b) The following legal requirement test applies to all MMC projects:
  - (1) If no law, regulation, or legally binding mandate requiring the destruction of methane at the mine at which the project is located exists at the time of offset project commencement, all emission reductions resulting from the capture and destruction of mine methane are considered to not be legally required, and therefore eligible for crediting under this protocol.
  - (2) If any law, regulation, or legally binding mandate requiring the destruction of methane at the mine at which the project is located exists at the time of offset project commencement, only emission reductions resulting from the capture and destruction of mine methane that are in excess of what is required to comply with those laws, regulations, and/or legally binding mandates are eligible for crediting under this protocol.

#### **§ 3.4.2. Performance Standard Evaluation.**

- (a) Emission reductions achieved by an MMC project must exceed those likely to occur in a conservative business-as-usual scenario.

- (b) The performance standard evaluation is satisfied if the following requirements are met, depending on the basis of activity type:
- (1) Active Underground Mine VAM Activities
    - (A) Destruction of VAM via any end-use management option automatically satisfies the performance standard evaluation because destruction of VAM is not common practice nor considered business-as-usual, and is therefore eligible for crediting under this protocol.
  - (2) Active Underground Mine Methane Drainage Activities
    - (A) Destruction of extracted mine methane via any end-use management option other than injection into a natural gas pipeline for off-site consumption automatically satisfies the performance standard evaluation because it is not common practice nor considered business-as-usual, and is therefore eligible for crediting under this protocol.
    - (B) Pipeline injection of mine methane extracted from methane drainage systems at active underground mines is common practice and considered business-as-usual, and therefore ineligible for crediting under this protocol.
  - (3) Active Surface Mine Methane Drainage Activities
    - (A) Destruction of extracted mine methane via any end-use management option automatically meets the performance standard evaluation because it is not common practice nor considered business-as-usual, and is therefore eligible for crediting under this protocol.
  - (4) Abandoned Mine Methane Recovery Activities
    - (A) Destruction of extracted mine methane via any end-use management option automatically meets the performance standard evaluation because is not common practice nor considered business-as-usual, and is therefore eligible for crediting under this protocol.

### **§ 3.5. Methane Source Boundaries.**

- (a) The methane destroyed for the purpose of reducing mine methane emissions under this protocol must be methane that would otherwise be emitted into the atmosphere during the normal course of mining activities.
- (b) To ensure that virgin coal bed methane is excluded from the destructed mine methane accounted for in this protocol, physical boundaries must be placed on the source of the methane.
- (c) All methane from a mine's ventilation and drainage systems must be collected from within the mine extents according to an up-to-date mine plan.
- (d) Additional physical boundaries on the basis of activity type are as follows:
  - (1) Active underground mine ventilation air methane activities may account for:
    - (A) all destructed methane contained in VAM collected from a mine ventilation system; and
    - (B) all destructed mine methane contained in mine gas extracted from a methane drainage system used to supplement VAM.
  - (2) Active underground mine methane drainage activities may account for:
    - (A) destructed mine methane contained in mine gas extracted from strata up to 150 meters above and 50 meters below a mined seam through pre-mining surface wells and pre-mining in-mine boreholes; and
    - (B) all destructed mine methane contained in mine gas extracted through gob wells.
  - (3) Active surface mine methane drainage activities may account for destructed surface mine methane contained in mine gas extracted from all strata above and up to 50 meters below a mined seam through pre-mining surface wells, pre-mining in-mine boreholes, existing coal bed methane wells that would otherwise be shut-in and abandoned as a result of encroaching mining, abandoned wells that are re-activated, and converted dewatering wells.

- (4) Abandoned underground mine methane recovery activities may account for:
  - (A) Destructed abandoned mine methane contained in mine gas extracted from strata up to 150 meters above and 50 meters below a mined seam through pre-mining surface wells and pre-mining in-mine boreholes drilled during active mining operations;
  - (B) Destructed abandoned mine methane contained in mine gas extracted from strata up to 150 meters above and 50 meters below a mine seam through newly drilled surface wells; and
  - (C) Destructed abandoned mine methane contained in mine gas extracted from strata up to 150 meters above and 50 meters below a mined seam through existing post-mining gob wells.

**§ 3.6. Offset Project Commencement.**

- (a) For this protocol, offset project commencement is defined as the date at which the offset project's mine methane capture and destruction equipment becomes operational. Equipment is considered *operational* on the date at which the system begins capturing and destroying methane gas.
- (b) Per the Regulation, compliance offset projects must have an offset project commencement date after December 31, 2006.

**§ 3.7. Project Crediting Period.**

The crediting period for this protocol is ten years.

**§ 3.8. Regulatory Compliance.**

- (a) An Offset Project Operator or Authorized Project Designee must fulfill all applicable local, regional, and national requirements on environmental impact assessments that apply based on the offset project location.
- (b) Offset project activity and implementation of the offset project must be in accordance with all applicable local, regional, and national environmental and health and safety regulations that apply to the offset project location.

## **Chapter 4. GHG Assessment Boundary – Quantification Methodology**

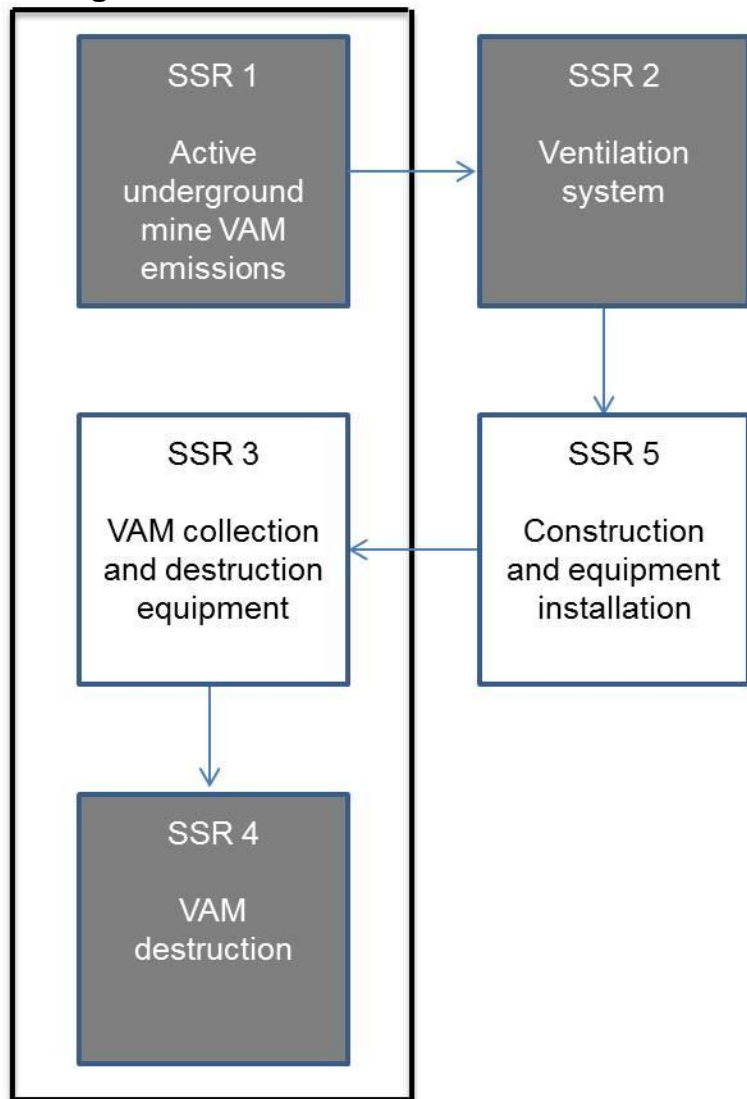
The greenhouse gas assessment boundary, or offset project boundary, delineates the GHG emission sources, sinks, and reservoirs (SSRs) that must be included or excluded when quantifying the net change in emissions associated with the installation and operation of a device, or set of devices, associated with the capture and destruction of mine methane. The following GHG assessment boundaries apply to all MMC projects on the basis of activity type:

### **§ 4.1. Active Underground Mine VAM Activities.**

- (a) Figure 4.1 illustrates the GHG assessment boundary for active underground mine VAM activities, indicating which SSRs are included or excluded from the offset project activities.
  - (1) All SSRs within the bold line are included and must be accounted for under this protocol.
  - (2) SSRs in unshaded boxes are relevant to the baseline and project emissions.
  - (3) SSRs in shaded boxes are relevant only to the project emissions.



**Figure 4.1. Illustration of the greenhouse gas assessment boundary for active underground mine VAM activities.**



(b) Table 4.1 lists the SSRs for active underground mine VAM activities, indicating which gases are included or excluded from the offset project boundary.

**Table 4.1. List of the greenhouse gas sinks, sources, and reservoirs for active underground mine VAM activities.**

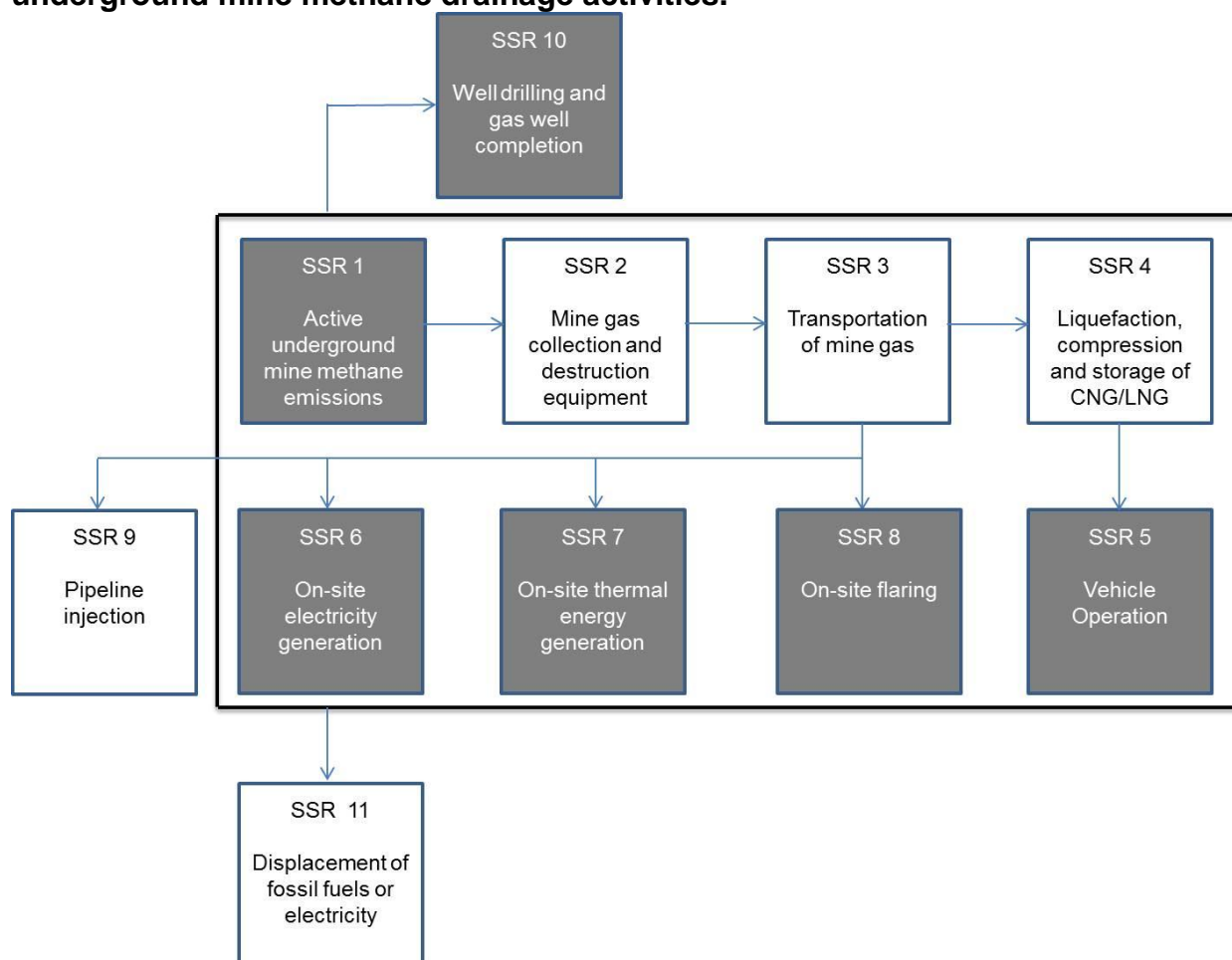
SSR	Description	GHG	Baseline (B) or Project (P)	Included/ Excluded
1	Emissions from the venting of VAM through mine ventilation system	CH <sub>4</sub>	B, P	Included

2	Emissions resulting from energy consumed to operate mine ventilation system	CO <sub>2</sub>	n/a	Excluded
		CH <sub>4</sub>	n/a	Excluded
		N <sub>2</sub> O	n/a	Excluded
3	Emissions resulting from energy consumed to operate VAM collection system/ destruction device	CO <sub>2</sub>	P	Included
		CH <sub>4</sub>	n/a	Excluded
		N <sub>2</sub> O	n/a	Excluded
4	Emissions resulting from VAM destruction	CO <sub>2</sub>	B, P	Included
		N <sub>2</sub> O	n/a	Excluded
	Emissions of uncombusted methane	CH <sub>4</sub>	P	Included
5	Emissions from construction and/or installation of new equipment	CO <sub>2</sub>	n/a	Excluded
		CH <sub>4</sub>	n/a	Excluded
		N <sub>2</sub> O	n/a	Excluded
	Fugitive emissions from construction	CH <sub>4</sub>	n/a	Excluded

#### § 4.2. Active Underground Mine Methane Drainage Activities.

- (a) Figure 4.2 illustrates the GHG assessment boundary for active underground mine methane drainage activities, indicating which SSRs are included or excluded from the offset project boundary.
- (1) All SSRs within the bold line are included and must be accounted for under this protocol.
  - (2) SSRs in unshaded boxes are relevant to the baseline and project emissions.
  - (3) SSRs in shaded boxes are relevant only to the project emissions.

**Figure 4.2. Illustration of the greenhouse gas assessment boundary for active underground mine methane drainage activities.**



(b) Table 4.2 lists the identified SSRs for active underground mine methane drainage activities, indicating which gases are included or excluded from the offset project boundary.

**Table 4.2. List of identified greenhouse gas sinks, sources, and reservoirs for active underground mine methane drainage activities.**

SSR	Description	GHG	Relevant to Baseline (B) or Project (P)	Included/ Excluded
1	Emissions from the venting of mine methane extracted through methane drainage system	CH <sub>4</sub>	B, P	Included
2	Emissions resulting from energy consumed to operate equipment used to capture, process and/or enrich drained mine gas	CO <sub>2</sub>	P	Included
		CH <sub>4</sub>	n/a	Excluded
		N <sub>2</sub> O	n/a	Excluded

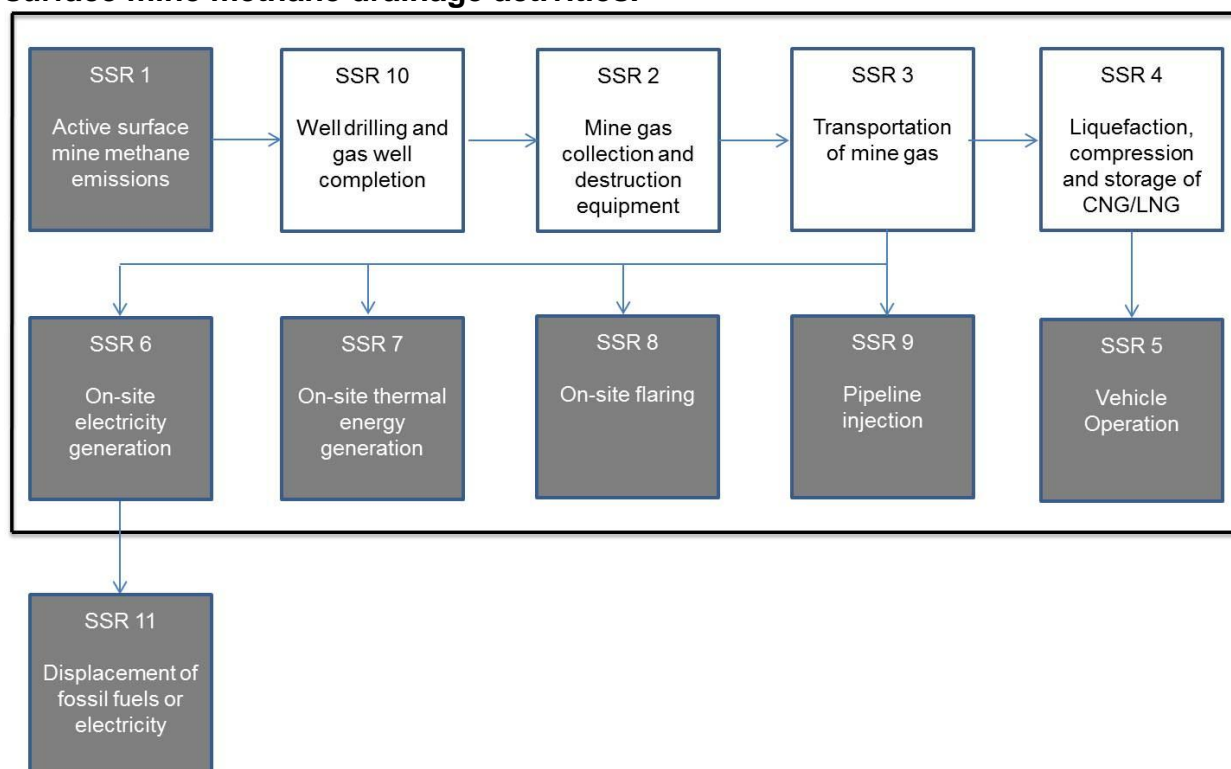
	Fugitive emissions from operation of equipment used to capture, process and/or enrich drained mine gas	CH <sub>4</sub>	n/a	Excluded
3	Emissions resulting from energy consumed to transport mine gas to processing or destruction equipment	CO <sub>2</sub>	P	Included
		CH <sub>4</sub>	n/a	Excluded
		N <sub>2</sub> O	n/a	Excluded
	Fugitive emissions from the on-site transportation of mine gas	CH <sub>4</sub>	n/a	Excluded
4	Emissions resulting from energy consumed to operate equipment used to liquefy, compress, or store methane for vehicle use.	CO <sub>2</sub>	P	Included
		CH <sub>4</sub>	n/a	Excluded
		N <sub>2</sub> O	n/a	Excluded
	Fugitive emissions from operation of equipment used to liquefy, compress, or store methane for vehicle use	CH <sub>4</sub>	n/a	Excluded
5	Emissions resulting from methane combustion during vehicle operation	CO <sub>2</sub>	B, P	Included
		N <sub>2</sub> O	n/a	Excluded
	Emissions resulting from incomplete methane combustion during vehicle operation	CH <sub>4</sub>	P	Included
6	Emissions resulting from methane combustion during on-site electricity generation	CO <sub>2</sub>	B, P	Included
		N <sub>2</sub> O	n/a	Excluded
	Emissions resulting from incomplete methane combustion during on-site electricity generation	CH <sub>4</sub>	P	Included
7	Emissions resulting from methane combustion during on-site thermal energy generation	CO <sub>2</sub>	B, P	Included
		N <sub>2</sub> O	n/a	Excluded
	Emissions resulting from incomplete methane combustion during on-site thermal energy generation	CH <sub>4</sub>	P	Included
8	Emissions resulting from methane combustion during on-site flaring	CO <sub>2</sub>	B, P	Included
		N <sub>2</sub> O	n/a	Excluded
	Emissions resulting from incomplete methane combustion during flaring	CH <sub>4</sub>	P	Included
9	Emissions resulting from methane combustion resulting from pipeline injection	CO <sub>2</sub>	n/a	Excluded
		N <sub>2</sub> O	n/a	Excluded
	Emissions resulting from the incomplete methane combustion resulting from pipeline injection	CH <sub>4</sub>	n/a	Excluded
10	Emissions from well drilling and	CO <sub>2</sub>	n/a	Excluded

	gas well completion	CH <sub>4</sub>	n/a	Excluded
		N <sub>2</sub> O	n/a	Excluded
	Fugitive emissions from well drilling and gas well completion	CH <sub>4</sub>	n/a	Excluded
11	Emission reductions resulting from the displacement of fossil fuels or electricity	CO <sub>2</sub>	n/a	Excluded
		CH <sub>4</sub>	n/a	Excluded
		N <sub>2</sub> O	n/a	Excluded

**§ 4.3. Active Surface Mine Methane Drainage Activities.**

- (a) Figure 4.3 illustrates the GHG assessment boundary for active surface mine methane drainage activities, indicating which SSRs are included or excluded from the offset project boundary.
- (1) All SSRs within the bold line are included and must be accounted for under this protocol.
  - (2) SSRs in unshaded boxes are relevant to the baseline and project emissions.
  - (3) SSRs in shaded boxes are relevant only to the project emissions.

**Figure 4.3. Illustration of the greenhouse gas assessment boundary for active surface mine methane drainage activities.**



- (b) Table 4.3 lists the SSRs for active surface mine methane drainage activities, indicating which gases are included or excluded from the offset project boundary.

**Table 4.3. List of the greenhouse gas sinks, sources, and reservoirs for active surface mine methane drainage activities.**

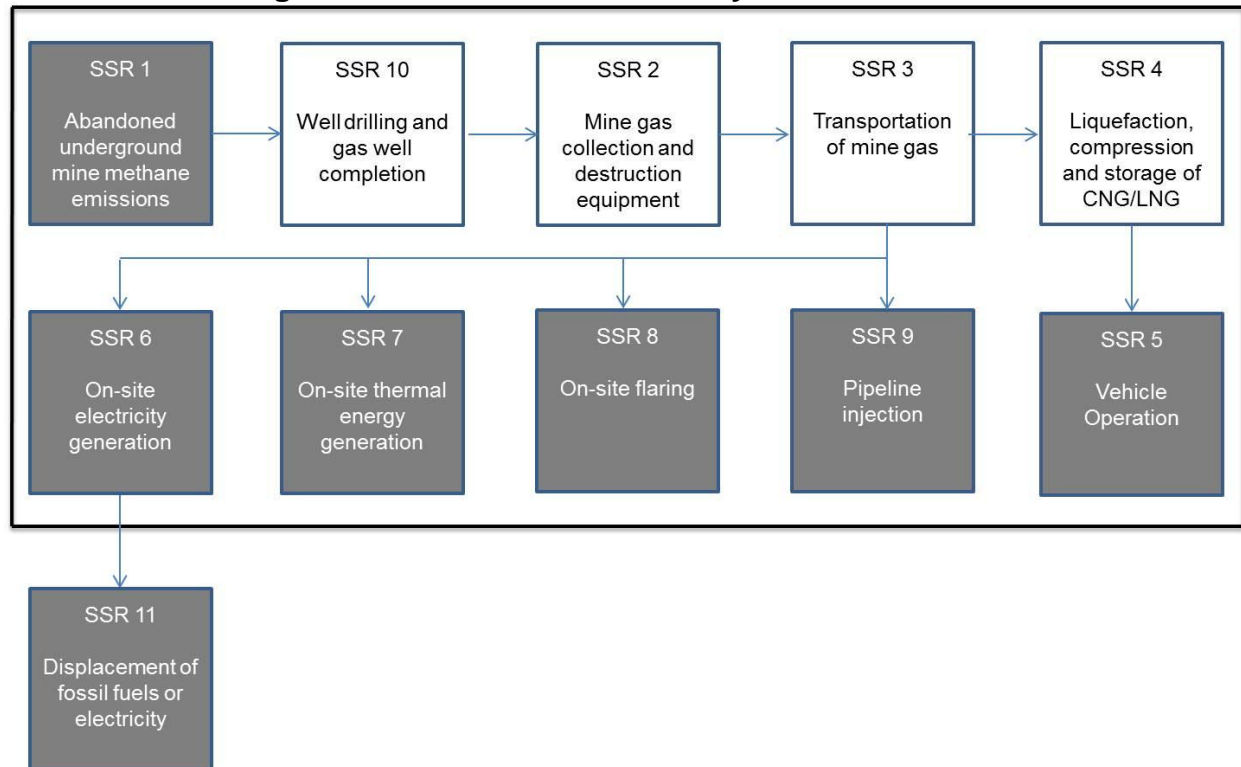
SSR	Description	GHG	Relevant to Baseline (B) or Project (P)	Included/ Excluded
1	Emissions from the venting of mine methane during the mining process	CH <sub>4</sub>	B, P	Included
2	Emissions resulting from energy consumed to operate equipment used to capture, process and/or enrich drained mine gas	CO <sub>2</sub>	P	Included
		CH <sub>4</sub>	n/a	Excluded
		N <sub>2</sub> O	n/a	Excluded
	Fugitive emissions from operation of equipment used to capture, process and/or enrich drained mine gas	CH <sub>4</sub>	n/a	Excluded
3	Emissions resulting from energy consumed to transport mine gas to processing or destruction equipment	CO <sub>2</sub>	P	Included
		CH <sub>4</sub>	n/a	Excluded
		N <sub>2</sub> O	n/a	Excluded
	Fugitive emissions from the on-site transportation of mine gas	CH <sub>4</sub>	n/a	Excluded
4	Emissions resulting from energy consumed to operate equipment used to liquefy, compress, or store methane for vehicle use.	CO <sub>2</sub>	P	Included
		CH <sub>4</sub>	n/a	Excluded
		N <sub>2</sub> O	n/a	Excluded
	Fugitive emissions from operation of equipment used to liquefy, compress, or store methane for vehicle use	CH <sub>4</sub>	n/a	Excluded
5	Emissions resulting from methane combustion during vehicle operation	CO <sub>2</sub>	B, P	Included
		N <sub>2</sub> O	n/a	Excluded
	Emissions resulting from incomplete methane combustion during vehicle operation	CH <sub>4</sub>	P	Included
6	Emissions resulting from methane combustion during on-site electricity generation	CO <sub>2</sub>	B, P	Included
		N <sub>2</sub> O	n/a	Excluded
	Emissions resulting from incomplete methane combustion during on-site electricity generation	CH <sub>4</sub>	P	Included
7	Emissions resulting from methane combustion during on-site thermal energy generation	CO <sub>2</sub>	B, P	Included
		N <sub>2</sub> O	n/a	Excluded

	Emissions resulting from incomplete methane combustion during on-site thermal energy generation	CH <sub>4</sub>	P	Included
8	Emissions resulting from methane combustion during on-site flaring	CO <sub>2</sub>	B, P	Included
		N <sub>2</sub> O	n/a	Excluded
	Emissions resulting from incomplete methane combustion during flaring	CH <sub>4</sub>	P	Included
9	Emissions resulting from methane combustion resulting from pipeline injection	CO <sub>2</sub>	B, P	Included
		N <sub>2</sub> O	n/a	Excluded
	Emissions resulting from the incomplete methane combustion resulting from pipeline injection	CH <sub>4</sub>	P	Included
10	Emissions from well drilling and well gas completion	CO <sub>2</sub>	P	Included
		CH <sub>4</sub>	n/a	Excluded
		N <sub>2</sub> O	n/a	Excluded
	Fugitive emissions from well drilling and gas well completion	CH <sub>4</sub>	n/a	Excluded
11	Emission reductions resulting from the displacement of fossil fuels or electricity	CO <sub>2</sub>	n/a	Excluded
		CH <sub>4</sub>	n/a	Excluded
		N <sub>2</sub> O	n/a	Excluded

**§ 4.4. Abandoned Underground Mine Methane Recovery Activities.**

- (a) Figure 4.4 illustrates the GHG assessment boundary for abandoned underground mine methane recovery activities, indicating which SSRs are included or excluded from the offset project boundary.
- (4) All SSRs within the bold line are included and must be accounted for under this protocol.
  - (5) SSRs in unshaded boxes are relevant to the baseline and project emissions.
  - (6) SSRs in shaded boxes are relevant only to the project emissions.

**Figure 4.4. Illustration of the greenhouse gas assessment boundary for abandoned underground mine methane recovery activities.**



(c) Table 4.4 lists the SSRs for abandoned underground mine methane recovery activities, indicating which gases are included or excluded from the offset project boundary.

**Table 4.4. List of the greenhouse gas sinks, sources, and reservoirs for abandoned underground mine methane recovery activities.**

SSR	Description	GHG	Relevant to Baseline (B) or Project (P)	Included/ Excluded
1	Emissions of mine methane liberated after the conclusion of mining operations	CH <sub>4</sub>	B, P	Included
2	Emissions resulting from energy consumed to operate equipment used to collect, process and/or enrich drained mine gas	CO <sub>2</sub>	P	Included
		CH <sub>4</sub>	n/a	Excluded
		N <sub>2</sub> O	n/a	Excluded
	Fugitive emissions from operation of equipment used to collect, process and/or enrich drained mine gas	CH <sub>4</sub>	n/a	Excluded
3	Emissions resulting from energy consumed to transport mine gas	CO <sub>2</sub>	P	Included
		CH <sub>4</sub>	n/a	Excluded



	to processing or destruction equipment	N <sub>2</sub> O	n/a	Excluded
	Fugitive emissions from the on-site transportation of mine gas	CH <sub>4</sub>	n/a	Excluded
4	Emissions resulting from energy consumed to operate equipment used to liquefy, compress, or store methane for vehicle use.	CO <sub>2</sub>	P	Included
		CH <sub>4</sub>	n/a	Excluded
		N <sub>2</sub> O	n/a	Excluded
	Fugitive emissions from operation of equipment used to liquefy, compress, or store methane for vehicle use	CH <sub>4</sub>	n/a	Excluded
5	Emissions resulting from methane combustion during vehicle operation	CO <sub>2</sub>	B, P	Included
		N <sub>2</sub> O	n/a	Excluded
	Emissions resulting from incomplete methane combustion during vehicle operation	CH <sub>4</sub>	P	Included
6	Emissions resulting from methane combustion during on-site electricity generation	CO <sub>2</sub>	B, P	Included
		N <sub>2</sub> O	n/a	Excluded
	Emissions resulting from incomplete methane combustion during on-site electricity generation	CH <sub>4</sub>	P	Included
7	Emissions resulting from methane combustion during on-site thermal energy generation	CO <sub>2</sub>	B, P	Included
		N <sub>2</sub> O	n/a	Excluded
	Emissions resulting from incomplete methane combustion during on-site electricity generation	CH <sub>4</sub>	P	Included
8	Emissions resulting from methane combustion during on-site flaring	CO <sub>2</sub>	B, P	Included
		N <sub>2</sub> O	n/a	Excluded
	Emissions resulting from incomplete methane combustion during flaring	CH <sub>4</sub>	P	Included
9	Emissions resulting from methane combustion resulting from pipeline injection	CO <sub>2</sub>	P	Included
		N <sub>2</sub> O	n/a	Excluded
	Emissions resulting from the incomplete methane combustion resulting from pipeline injection	CH <sub>4</sub>	P	Included
10	Emissions from well drilling and well gas completion	CO <sub>2</sub>	P	Included
		CH <sub>4</sub>	n/a	Excluded
	Emissions resulting from the incomplete methane combustion resulting from pipeline injection	N <sub>2</sub> O	n/a	Excluded
	Fugitive emissions from well drilling and gas well completion	CH <sub>4</sub>	n/a	Excluded
11	Emission reductions resulting from the displacement of fossil fuels or electricity	CO <sub>2</sub>	n/a	Excluded
		CH <sub>4</sub>	n/a	Excluded
		N <sub>2</sub> O	n/a	Excluded

## Chapter 5. Quantifying GHG Emission Reductions – Quantification Methodology

- (a) GHG emission reductions from an MMC project are quantified by comparing actual project emissions to project baseline emissions at the mine.
- (b) Offset Project Operators and Authorized Project Designees must use the activity type-specific calculation methods provided in this protocol to determine baseline and project GHG emissions.
- (c) GHG emission reductions must be quantified on at least an annual basis. The length of time over which GHG emission reductions are quantified is called the “reporting period.”
- (d) Measurements used to quantify emission reductions must be corrected to standard conditions of 60°F and 14.696 pounds per square inch (1 atm).
- (e) Global warming potential values must be determined consistent with the definition of Carbon Dioxide Equivalent in MRR section 95102(a).

### § 5.1. Active Underground Ventilation Air Methane Activities.

- (a) GHG emission reductions for a reporting period (ER) must be quantified by subtracting the project emissions for that reporting period (PE) from the baseline emissions for that reporting period (BE) using Equation 5.1.

#### Equation 5.1: GHG Emission Reductions

$$ER = BE - PE$$

Where,

*ER* = Emission reductions achieved by the project during the reporting period (tCO<sub>2</sub>e)

*BE* = Baseline emissions during the reporting period (tCO<sub>2</sub>e)

*PE* = Project emissions during the reporting period (tCO<sub>2</sub>e)

#### § 5.1.1. Quantifying Baseline Emissions

- (a) Baseline emissions for a reporting period (BE) must be estimated by summing the baseline emissions for all SSRs identified as included in the baseline in Table 4.1 and by using Equation 5.2.

**Equation 5.2: Baseline Emissions**

$$BE = BE_{MD} + BE_{MR}$$

Where,

- $BE$  = Baseline emissions during the reporting period (tCO<sub>2</sub>e)  
 $BE_{MD}$  = Baseline emissions from destruction of methane during the reporting period (tCO<sub>2</sub>e)  
 $BE_{MR}$  = Baseline emissions from release of methane into the atmosphere avoided by the project during the reporting period (tCO<sub>2</sub>e)

- (b) Baseline emissions from the destruction of methane ( $BE_{MD}$ ) must be quantified using Equation 5.3.
- (c)  $BE_{MD}$  must include the estimated CO<sub>2</sub> emissions from the destruction of VAM by non-qualifying devices.
- (d) The volume of VAM destroyed in the baseline must be determined by calculating and comparing:
- (1) The volume of VAM destroyed by non-qualifying devices during the reporting period, adjusted for temperature and pressure, if applicable, using Equation 5.10; and
  - (2) The volume of VAM destroyed by non-qualifying devices during the three-year period prior to offset project commencement (or during the length of time the devices are operational, if less than three years), adjusted for temperature and pressure, if applicable, using Equation 5.10 and averaged according to the length of the reporting period.
- (e) The larger of the two above quantities must be used for  $VAM_{B,i}$  in Equation 5.3.
- (f) For the purpose of baseline quantification, only non-qualifying devices that were operating during the year prior to offset project commencement should be taken into account.
- (g) If there is no destruction of methane in the baseline, then  $BE_{MD} = 0$ .

**Equation 5.3: Baseline Emissions from Destruction of Methane**

$$BE_{MD} = \sum_i VAM_{B,i} \times C_{CH4} \times 0.0423 \times 0.000454 \times CEF_{CH4}$$

Where,

$BE_{MD}$	=	Baseline emissions from destruction of methane during the reporting period (tCO <sub>2</sub> e)
$i$	=	Use of methane (oxidation or alternative combustion end use)
$VAM_{B,i}$	=	Volume of VAM that would have been sent to a non-qualifying device for destruction through use $i$ during the reporting period in the baseline scenario (scf)
$C_{CH4}$	=	Measured methane concentration of captured ventilation air (scf CH <sub>4</sub> /scf)
0.454	=	Density of methane (lb CH <sub>4</sub> /scf CH <sub>4</sub> )
0.000454	=	tCH <sub>4</sub> /lb CH <sub>4</sub>
$CEF_{CH4}$	=	CO <sub>2</sub> emission factor for combusted methane (2.75 tCO <sub>2</sub> e/tCH <sub>4</sub> )

- (h) Baseline emissions from the release of methane ( $BE_{MR}$ ) must be quantified using Equation 5.4.
- (i)  $BE_{MR}$  must account for the total amount of methane actually destroyed by all qualifying and non-qualifying devices.
- (j) VAM project activities may supplement VAM with mine gas (MG) extracted from a methane drainage system to either increase or help balance the concentration of methane flowing into the destruction device. If MG is used to supplement VAM, the MG destroyed by the project during the reporting period must be accounted for using Equation 5.4 either as  $MG_{SUPP,i}$ , if VAM flow and mine methane flow are monitored separately, or through  $VAM_{P,i}$  if only the resulting enriched flow is monitored.
- (k) Methane that is still vented in the project scenario is not accounted for in the project emissions or baseline emissions since it is vented in both scenarios.

**Equation 5.4: Baseline Emissions from Release of Methane**

$$BE_{MR} = \sum_i [(VAM_{P,i} - VAM_{B,i}) \times C_{CH4} \times + MG_{SUPP,i} \times C_{CH4MG}] \times 0.0423 \times 0.000454 \times GWP_{CH4}$$

Where,

- $BE_{MR}$  = Baseline emissions from release of methane into the atmosphere avoided by the project during the reporting period (tCO<sub>2</sub>e)
- $i$  = Use of methane (oxidation or alternative combustion end use)

$VAM_{P,i}$	=	Volume of ventilation air sent to qualifying and non-qualifying devices for destruction through use $i$ during the project during the reporting period (scf)
$VAM_{B,i}$	=	Volume of ventilation air that would have sent to non-qualifying devices for destruction through use $i$ during the reporting period in the baseline scenario (scf)
$C_{CH_4}$	=	Measured methane concentration of captured ventilation air (scf $CH_4$ /scf)
$MG_{SUPP,i}$	=	Volume of mine methane extracted from a methane drainage system and sent to qualifying and non-qualifying devices for destruction with VAM (scf)
$C_{CH_4MG}$	=	Measured methane concentration of captured mine gas (scf $CH_4$ /scf)
0.0423	=	Density of methane (lb $CH_4$ /scf $CH_4$ )
0.000454	=	t $CH_4$ /lb $CH_4$
$GWP_{CH_4}$	=	Global warming potential of methane (t $CO_2e$ /t $CH_4$ )

### § 5.1.2. Quantifying Project Emissions.

- (a) Project emissions must be quantified on an annual basis.
- (b) Project emissions for a reporting period (PE) must be quantified by summing the emissions for all SSRs identified as included in the project in Table 4.1 and using Equation 5.5.
- (c) Methane that is still vented in the project scenario is not accounted for in the project emissions or baseline emissions since it is vented in both scenarios.

#### Equation 5.5: Project Emissions

$$PE = PE_{EC} + PE_{MD} + PE_{UM}$$

Where,

$PE$	=	Project emissions during the reporting period (t $CO_2e$ )
$PE_{EC}$	=	Project emissions from energy consumed to capture and destroy methane during the reporting period (t $CO_2e$ )
$PE_{MD}$	=	Project emissions from destruction of methane during the reporting period (t $CO_2e$ )
$PE_{UM}$	=	Project emissions from uncombusted methane during the reporting period (t $CO_2e$ )

- (d) If the project uses fossil fuel or grid electricity to power additional equipment required for project activities, the resulting  $CO_2$  emissions from the energy

consumed to capture and destroy methane ( $PE_{EC}$ ) must be quantified using Equation 5.6.

**Equation 5.6: Project Emissions from Energy Consumed to Capture and Destroy Methane**

$$PE_{EC} = (CONS_{ELEC} \times CEF_{ELEC}) + \frac{(CONS_{HEAT} \times CEF_{HEAT} + CONS_{FF} \times CEF_{FF})}{1000}$$

Where,

- $PE_{EC}$  = Project emissions from energy consumed to capture and destroy methane during the reporting period (tCO<sub>2</sub>e)
- $CONS_{ELEC}$  = Additional electricity consumption for the capture and destruction of methane during the reporting period (MWh)
- $CEF_{ELEC}$  = CO<sub>2</sub> emission factor of electricity used from Appendix A (tCO<sub>2</sub>e/MWh)
- $CONS_{HEAT}$  = Additional heat consumption for the capture and destruction of methane during the reporting period (volume)
- $CEF_{HEAT}$  = CO<sub>2</sub> emission factor of heat used from Appendix A (kg CO<sub>2</sub>/volume)
- $CONS_{FF}$  = Additional fossil fuel consumption for the capture and destruction of methane during the reporting period (volume)
- $CEF_{FF}$  = CO<sub>2</sub> emission factor of fossil fuel used from Appendix A (kg CO<sub>2</sub>/volume)
- 1/1000 = Conversion of kg to metric tons

- (e) Project emissions from the destruction of methane ( $PE_{MD}$ ) must be quantified using Equations 5.7 and 5.8.
- (f)  $PE_{MD}$  must include the estimated CO<sub>2</sub> emissions from the destruction of VAM by all qualifying and non-qualifying devices.
- (g) If MG is used to supplement VAM, the MG destructed by the project during the reporting period must be accounted for using Equation 5.8 either as  $MG_{SUPP,i}$ , if VAM flow and mine methane flow are monitored separately, or through  $VAM_{P,i}$  if only the resulting enriched flow is monitored.

**Equation 5.7: Project Emissions from Destruction of Captured Methane**

$$PE_{MD} = \sum_i MD_i \times CEF_{CH4}$$

Where,

$PE_{MD}$	= Project emissions from destruction of methane during the reporting period (tCO <sub>2</sub> e)
$i$	= Use of methane (oxidation or alternative combustion end use) by all qualifying and non-qualifying devices
$MD_i$	= Methane destroyed by use $i$ during the reporting period (tCH <sub>4</sub> )
$CEF_{CH_4}$	= CO <sub>2</sub> emission factor for combusted methane (2.75 tCO <sub>2</sub> e/tCH <sub>4</sub> )

### Equation 5.8: Methane Destroyed by VAM Oxidation

$$MD_i = \sum_i MM_i - PE_{NO}$$

Where,

$MD_i$	= Methane destroyed by use $i$ during the reporting period (tCH <sub>4</sub> )
$i$	= Use of methane (oxidation or alternative combustion end use) by all qualifying and non-qualifying devices
$MM_i$	= Mine methane sent to destruction device (tCH <sub>4</sub> )
$PE_{NO}$	= Project emissions of non-oxidized methane from oxidation of the VAM stream during the reporting period (tCH <sub>4</sub> )

With:

$$MM_i = (VAM_i \times C_{CH_4} + MG_{SUPP,i} \times C_{CH_4MG}) \times 0.0423 \times 0.000454$$

Where,

$VAM_{P,i}$	= Volume of ventilation air sent to qualifying and non-qualifying devices for destruction through use $i$ during the project during the reporting period (scf)
$C_{CH_4}$	= Measured methane concentration of captured ventilation air (scf CH <sub>4</sub> /scf)
$MG_{SUPP,i}$	= Volume of mine methane extracted from a methane drainage system and sent to destruction device with VAM (scf)
$C_{CH_4MG}$	= Measured methane concentration of captured mine gas (scf CH <sub>4</sub> /scf)
0.0423	= Density of methane (lb CH <sub>4</sub> /scf CH <sub>4</sub> )
0.000454	= tCH <sub>4</sub> /lb CH <sub>4</sub>

With:

$$VAM_{P,i} = VAM_{FLOW,y} \times TIME_y$$

Where,

$VAM_{FLOW,y}$  = Average flow rate of ventilation air entering the destruction device during period y corrected to standard conditions, if applicable, for inlet flow gas pressure and temperature (scfm)

$TIME_y$  = Time during which destruction device is operational during period y (m)

And:

$$PE_{NO} = VAM_{FLOW,y} \times TIME_y \times C_{CH4,exhaust} \times 0.0423 \times 0.000454$$

Where,

$C_{CH4,exhaust}$  = Measured methane concentration in the ventilation air exhaust (scf CH<sub>4</sub>/scf)

- (h) Project emissions from uncombusted methane ( $PE_{UM}$ ) must be quantified using Equation 5.9.

#### Equation 5.9: Uncombusted Methane Emissions

$$PE_{UM} = PE_{NO} \times GWP_{CH4}$$

Where,

$PE_{UM}$  = Project emissions from uncombusted methane during the reporting period (tCO<sub>2</sub>e)

$PE_{NO}$  = Project emissions of non-oxidized methane from oxidation of the VAM stream during the reporting period (tCH<sub>4</sub>)

$GWP_{CH4}$  = Global warming potential of methane (tCO<sub>2</sub>e/tCH<sub>4</sub>)

With,

$$PE_{NO} = VAM_{FLOW,y} \times TIME_y \times C_{CH4,exhaust} \times 0.0423 \times 0.000454$$

Where,

$VAM_{FLOW,y}$  = Corrected average flow rate or total volume of ventilation air entering the destruction device during period y, adjusted to 60°F and 1 atm (scf/unit of time)

$TIME_y$  = Time during which destruction device is operational during period y (m)

$C_{CH4,exhaust}$  = Measured methane concentration in the ventilation air exhaust (scf CH<sub>4</sub>/scf)

- (i) If gas flow metering equipment does not internally correct for temperature and pressure, apply Equation 5.10 to the flow rate of ventilation air entering the destruction device.



**Equation 5.10: VAM Corrected for Temperature and Pressure**

$$VAM_{FLOW,y} = VAM_{FLOWmeas,y} \times \frac{520}{T_{VAMinflow,y}} \times \frac{P_{VAMinflow,y}}{1}$$

Where,

$VAM_{FLOW,y}$  = Corrected average flow rate or total volume of ventilation air entering the destruction device during period y, adjusted to 60°F and 1 atm (scf/unit of time)

$VAM_{FLOWmeas,y}$  = Measured average flow rate or total volume of ventilation air entering the destruction device as measured during period y (scf/unit of time)

$T_{VAMinflow,y}$  = Measured temperature of ventilation air entering the destruction device for the time interval y, °R=°F+460 (°R)

$P_{VAMinflow,y}$  = Measured pressure of ventilation air entering the destruction device for the time interval y (atm)

**§ 5.2. Active Underground Mine Methane Drainage Activities.**

- (a) GHG emission reductions for a reporting period (ER) must be quantified by subtracting the project emissions for that reporting period (PE) from the baseline emissions for that reporting period (BE) using Equation 5.11.
- (b) If a mine that has historically sent mine methane (MM) to a natural gas pipeline ceases to do so, MM from that source (pre-mining surface wells, pre-mining in-mine boreholes, or post-mining gob wells) is ineligible for emission reduction under this protocol, even if the MM is sent to an otherwise eligible destruction device. If a mine begins to inject MM into a natural gas pipeline while the offset project is ongoing, MM from that source is ineligible for emission reductions going forward.
- (c) MM that is injected into a natural gas pipeline in the project scenario is not accounted for in the project emissions or baseline emissions, since it is injected in both scenarios.

**Equation 5.11: GHG Emission Reductions**

$$ER = BE - PE$$

Where,

$ER$  = Emission reductions achieved by the project during the reporting period (tCO<sub>2</sub>e)

$BE$	=	Baseline emissions during the reporting period (tCO <sub>2</sub> e)
$PE$	=	Project emissions during the reporting period (tCO <sub>2</sub> e)

**§ 5.2.1. Quantifying Baseline Emissions.**

- (a) Baseline emissions for a reporting period (BE) must be estimated by summing the baseline emissions for all SSRs identified as included in the baseline in Table 4.2 and using Equation 5.12.

**Equation 5.12: Baseline Emissions**

$$BE = BE_{MD} + BE_{MR}$$

Where,

$BE$	=	Baseline emissions during the reporting period (tCO <sub>2</sub> e)
$BE_{MD}$	=	Baseline emissions from destruction of methane during the reporting period (tCO <sub>2</sub> e)
$BE_{MR}$	=	Baseline emissions from release of methane into the atmosphere avoided by the project during the reporting period (tCO <sub>2</sub> e)

- (b) Baseline emissions from the destruction of MM (BE<sub>MD</sub>) must be quantified using Equation 5.13.
- (c) BE<sub>MD</sub> must include the estimated CO<sub>2</sub> emissions from the destruction of MM in non-qualifying devices.
- (d) Mine gas (MG) can originate from three distinct sources for active underground mine methane drainage activities: pre-mining surface wells, pre-mining in-mine boreholes, and post-mining gob wells. MG from these sources must be measured and accounted for individually per the equations in this section.
- (e) For each eligible methane source, the volume of MG destroyed in the baseline must be determined by calculating and comparing:
- (1) The volume of MG destroyed by non-qualifying devices during the reporting period, adjusted for temperature and pressure, if applicable, using Equation 5.21; and
  - (2) The volume of MG destroyed by non-qualifying devices during the three-year period prior to offset project commencement (or during the length of time the devices are operational, if less than three years), adjusted for

temperature and pressure, if applicable, using Equation 5.21 and averaged according to the length of the reporting period.

- (f) For each methane source, the larger of the two above quantities must be used in Equation 5.13.
- (g) For the purpose of baseline quantification, only non-qualifying devices that were operating during the year prior to offset project commencement should be taken into account.
- (h) If there is no destruction of methane in the baseline, then  $BE_{MD} = 0$ .

**Equation 5.13: Baseline Emissions from Destruction of Methane**

$$BE_{MD} = \sum_i (PSW_{B,i} \times C_{CH4} + PIB_{B,i} \times C_{CH4} + PGW_{B,i} \times C_{CH4}) \times 0.0423 \times 0.000454 \times CEF_{CH4}$$

Where,

- $BE_{MD}$  = Baseline emissions from destruction of methane during the reporting period (tCO<sub>2</sub>e)
- $i$  = Use of methane (flaring, power generation, heat generation, production of transportation fuel, etc.)
- $PSW_{B,i}$  = Volume of MG from pre-mining surface wells that would have been sent to non-qualifying devices for destruction through use  $i$  during the reporting period in the baseline scenario (scf)
- $PIB_{B,i}$  = Volume of MG from pre-mining in-mine boreholes that would have been sent to non-qualifying devices for destruction through use  $i$  during the reporting period in the baseline scenario (scf)
- $PGW_{B,i}$  = Volume of MG from post-mining gob wells that would have been sent to non-qualifying devices for destruction through use  $i$  during the reporting period in the baseline scenario (scf)
- $C_{CH4}$  = Measured methane concentration of mine gas captured from methane source (scf CH<sub>4</sub>/scf)
- 0.0423 = Density of methane (lb CH<sub>4</sub>/scf CH<sub>4</sub>)
- 0.000454 = tCH<sub>4</sub>/lb CH<sub>4</sub>
- $CEF_{CH4}$  = CO<sub>2</sub> emission factor for combusted methane (2.75 tCO<sub>2</sub>e/tCH<sub>4</sub>)

- (i) Baseline emissions from the release of methane ( $BE_{MR}$ ) must be quantified using Equation 5.14.

- (j)  $BE_{MR}$  must account for the total amount of methane actually destroyed by all qualifying and non-qualifying devices.
- (k) Emissions from the release of methane through pre-mining surface wells are only accounted for in the baseline during the reporting period(s) in which the emissions would have occurred (i.e. when the well is mined through). For the purposes of this protocol, a well at an active underground mine is considered mined through when any of the following occur:
  - (1) The working face intersects the borehole, as long as the endpoint of the borehole is not more than 50 meters below the mined coal seam;
  - (2) The working face passes directly underneath the bottom of the borehole, as long as the endpoint of the borehole is not more than 150 meters above the mined coal seam;
  - (3) The working face passes both underneath (not more than 150 meters below the endpoint of the borehole) and to the side of the borehole if room and pillar mining technique is employed and the endpoint of the borehole lies above a block of coal that will be left unmined as a pillar; or
  - (4) The well produces elevated amounts of atmospheric gases (the percent concentration of nitrogen in mine gas increases by five compared to baseline levels). A full gas analysis using a gas chromatograph must be completed by an ISO 17025 accredited lab. To ensure that elevated nitrogen levels are the result of a well being mined through and not the result of a leak in the well, the gas analysis must show that oxygen levels did not increase by the same proportion as the nitrogen levels.
- (l) If using option 1, 2, or 3 to demonstrate that a well is mined through, an up-to-date mine plan must be used to identify which wells were mined through, based on the above criteria, and therefore eligible for baseline quantification in any given reporting period.
- (m) If the mine plan calls for mining past rather than through a borehole, MM from that borehole is eligible for quantification in the baseline when the linear distance between the endpoint of the borehole and the working face that will pass nearest the endpoint of the borehole has reached an absolute minimum.

- (n) If an MMC project at an active underground mine consists of both VAM and methane drainage activities, mine gas extracted from a methane drainage system (MG) may be used to supplement VAM to either increase or help balance the concentration of methane flowing into the destruction device. If MG is used to supplement VAM, the MG destroyed by the project during the reporting period must be accounted for using Equation 5.14 as  $MG_{SUPP,i}$ .
- (o) MM that is still vented in the project scenario is not accounted for in the project emissions or baseline emissions, since it is vented in both scenarios.

**Equation 5.14: Baseline Emissions from Release of Methane**

$$BE_{MR} = \sum_i [(PSW_{P,i} - PSW_{B,i}) \times C_{CH4} + (PIB_{P,i} - PIB_{B,i}) \times C_{CH4} + (PGW_{P,i} - PGW_{B,i}) \times C_{CH4} - MG_{SUPP,i} \times C_{CH4MG}] \times 0.0423 \times 0.000454 \times GWP_{CH4}$$

Where,

- $BE_{MR}$  = Baseline emissions from release of methane into the atmosphere avoided by the project during the reporting period (tCO<sub>2</sub>e)
- $i$  = Use of methane (flaring, power generation, heat generation, production of transportation fuel, etc.) by all qualifying and non-qualifying devices
- $PSW_{P,i}$  = Volume of MG from pre-mining surface wells sent to qualifying and non-qualifying devices for destruction through use  $i$  during the reporting period. For qualifying devices, only the eligible amount per Equation 5.15 in accordance with sections 5.2.1(k), (l) and (m) must be quantified (scf)
- $PSW_{B,i}$  = Volume of MG from pre-mining surface wells that would have been sent to non-qualifying devices for destruction through use  $i$  during the reporting period in the baseline scenario (scf)
- $PIB_{P,i}$  = Volume of MG from pre-mining in-mine boreholes sent to qualifying and non-qualifying devices for destruction through use  $i$  during the reporting period (scf)
- $PIB_{B,i}$  = Volume of MG from pre-mining in-mine boreholes that would have been sent to non-qualifying devices for destruction through use  $i$  during the reporting period in the baseline scenario (scf)
- $PGW_{P,i}$  = Volume of MG from post-mining gob wells sent to qualifying and non-qualifying devices for destruction through use  $i$  during the reporting period (scf)

$PGW_{B,i}$	=	Volume of MG from post-mining gob wells that would have been sent to non-qualifying device for destruction through use $i$ during the reporting period in the baseline scenario (scf)
$C_{CH_4}$	=	Measured methane concentration of mine gas captured from methane source (scf CH <sub>4</sub> /scf)
$MG_{SUPP,i}$	=	Volume of mine methane extracted from a methane drainage system and sent to qualifying and non-qualifying devices for combustion with VAM (scf)
$C_{CH_4MG}$	=	Measured methane concentration of captured mine gas (scf CH <sub>4</sub> /scf)
0.0423	=	Density of methane (lb CH <sub>4</sub> /scf CH <sub>4</sub> )
0.000454	=	tCH <sub>4</sub> /lb CH <sub>4</sub>
$GWP_{CH_4}$	=	Global warming potential of methane (tCO <sub>2</sub> e/tCH <sub>4</sub> )

With,

$$PSW_{P,i} = PSWe_i + PSWnqd_i$$

Where,

$PSWe_i$  = Volume of MG from pre-mining surface wells sent to qualifying devices for destruction through use  $i$  that is eligible for quantification in the reporting period. Quantified using Equation 5.15. (scf)

$PSWnqd_i$  = Volume of MG from pre-mining surface wells sent to non-qualifying devices for destruction through use  $i$  during the reporting period (scf)

(p) The eligible amount of MG from pre-mining surface wells destroyed by qualifying devices ( $PSWe_i$ ) must be determined by using Equation 5.15.

### Equation 5.15: Eligible MG from Pre-mining Surface Boreholes

$$PSWe_i = PSWe_{pre,i} + PSWe_{post,i}$$

Where,

$PSWe_i$  = Volume of MG from pre-mining surface wells captured and destroyed by qualifying devices through use  $i$  that is eligible for quantification in the reporting period using Equation 5.14 (scf)

$i$  = Use of methane (flaring, power generation, heat generation, production of transportation fuel, etc.) by all qualifying devices

$PSWe_{pre,i}$  = Volume of MG destroyed by qualifying destruction devices, from the offset project commencement date through the end of the current

reporting period, captured from pre-mining surface wells that were mined through during the current reporting period (scf)

$PSWe_{post,i}$  = Volume of MG destroyed by qualifying destruction devices in the current reporting period captured from pre-mining surface wells that were mined through during earlier reporting periods (scf)

**§ 5.2.2. Quantifying Project Emissions.**

- (a) Project emissions must be quantified on an annual basis.
- (b) Project emissions for a reporting period (PE) must be quantified by summing the emissions for all SSRs identified as included in the project in Table 4.2 and using Equation 5.16.
- (c) Methane that is still vented in the project scenario is not accounted for in the project emissions or baseline emissions since it is vented in both scenarios.

**Equation 5.16: Project Emissions**

$$PE = PE_{EC} + PE_{MD} + PE_{UM}$$

Where,

- $PE$  = Project emissions during the reporting period (tCO<sub>2</sub>e)
- $PE_{EC}$  = Project emissions from energy consumed to capture and destroy methane during the reporting period (tCO<sub>2</sub>e)
- $PE_{MD}$  = Project emissions from destruction of methane during the reporting period (tCO<sub>2</sub>e)
- $PE_{UM}$  = Project emissions from uncombusted methane during the reporting period (tCO<sub>2</sub>e)

- (d) If the project uses fossil fuel or grid electricity to power additional equipment required for project activities, the resulting CO<sub>2</sub> emissions from the energy consumed to capture and destroy methane ( $PE_{EC}$ ) must be quantified using Equation 5.17.
- (e) If the total electricity generated by project activities is greater than the additional electricity consumed for the capture and destruction of methane, then the  $CONS_{ELEC}$  term may be omitted from Equation 5.17.

**Equation 5.17: Project Emissions from Energy Consumed to Capture and Destroy Methane**

$$PE_{EC} = (CONS_{ELEC} \times CEF_{ELEC}) + \frac{(CONS_{HEAT} \times CEF_{HEAT} + CONS_{FF} \times CEF_{FF})}{1000}$$

Where,

- $PE_{EC}$  = Project emissions from energy consumed to capture and destroy methane during the reporting period (tCO<sub>2</sub>e)
- $CONS_{ELEC}$  = Additional electricity consumption for the capture and destruction of methane during the reporting period (MWh)
- $CEF_{ELEC}$  = CO<sub>2</sub> emission factor of electricity used from Appendix A (tCO<sub>2</sub>e/MWh)
- $CONS_{HEAT}$  = Additional heat consumption for the capture and destruction of methane during the reporting period (volume)
- $CEF_{HEAT}$  = CO<sub>2</sub> emission factor of heat used from Appendix A (kg CO<sub>2</sub>/volume)
- $CONS_{FF}$  = Additional fossil fuel consumption for the capture and destruction of methane during the reporting period (volume)
- $CEF_{FF}$  = CO<sub>2</sub> emission factor of fossil fuel used from Appendix A (kg CO<sub>2</sub>/volume)
- 1/1000 = Conversion of kg to metric tons

- (f) Project emissions from the destruction of methane (PE<sub>MD</sub>) must be quantified using Equations 5.18 and 5.19.
- (g) Project emissions must include the CO<sub>2</sub> emissions resulting from the destruction of all MM from pre-mining surface wells that took place during the reporting period regardless of whether or not the well is mined through by the end of the reporting period.

**Equation 5.18: Project Emissions from Destruction of Captured Methane**

$$PE_{MD} = \sum_i MD_i \times CEF_{CH4}$$

Where,

- $PE_{MD}$  = Project emissions from destruction of methane during the reporting period (tCO<sub>2</sub>e)
- $i$  = Use of methane (flaring, power generation, heat generation, production of transportation fuel, etc.) by all qualifying and non-qualifying devices
- $MD_i$  = Methane destroyed by use  $i$  during the reporting period (tCH<sub>4</sub>)
- $CEF_{CH4}$  = CO<sub>2</sub> emission factor for combusted methane (2.75 tCO<sub>2</sub>e/tCH<sub>4</sub>)



- (h) The amount of mine methane destroyed ( $MD_i$ ) must be quantified using Equation 5.19.
- (i) Offset Project Operators and Authorized Project Designees may choose to use default methane destruction efficiencies ( $DE_i$ ) provided in Appendix B or site-specific methane destruction efficiencies. Site-specific methane destruction efficiencies must be determined using an ARB approved methodology.

**Equation 5.19: Methane Destroyed**

$$MD_i = \sum_i MM_i \times DE_i$$

Where,

- $MD_i$  = Methane destroyed by use  $i$  during the reporting period (tCH<sub>4</sub>)
- $i$  = Use of methane (flaring, power generation, heat generation, production of transportation fuel, etc.) by all qualifying and non-qualifying devices
- $MM_i$  = Methane measured sent to use  $i$  during the reporting period corrected to standard conditions, if applicable, for pressure and temperature (tCH<sub>4</sub>)
- $DE_i$  = Efficiency of methane destruction device  $i$ , either site-specific or from Appendix B (%)

With:

$$MM_i = \sum_i (PSW_{P,all,i} \times C_{CH4} + PIB_{P,i} \times C_{CH4} + PGW_{P,i} \times C_{CH4} - MG_{SUPP,i} \times C_{CH4MG}) \times 0.0423 \times 0.000454$$

Where,

- $PSW_{P,all,i}$  = Volume of MG from pre-mining surface wells captured and destroyed by qualifying and non-qualifying devices through use  $i$  during the reporting period. For qualifying devices, all MG, whether from a mined through well or not must be quantified (scf)
- $PIB_{P,i}$  = Volume of MG from pre-mining in-mine boreholes captured and destroyed by qualifying and non-qualifying devices through use  $i$  during the reporting period (scf)
- $PGW_{P,i}$  = Volume of MG from post-mining gob wells captured and destroyed by qualifying and non-qualifying devices through use  $i$  during the reporting period (scf)
- $C_{CH4}$  = Measured methane concentration of mine gas captured from methane source (scf CH<sub>4</sub>/scf)

$MG_{SUPP,i}$	=	Volume of mine methane extracted from a methane drainage system and combusted with VAM (scf)
$C_{CH4MG}$	=	Measured methane concentration of captured mine gas (scf CH <sub>4</sub> /scf)
0.0423	=	Density of methane (lb CH <sub>4</sub> /scf CH <sub>4</sub> )
0.000454	=	tCH <sub>4</sub> /lb CH <sub>4</sub>

- (j) Project emissions from uncombusted methane ( $PE_{UM}$ ) must be quantified using Equation 5.20.
- (k) Offset Project Operators and Authorized Project Designees may choose to use default methane destruction efficiencies ( $DE_i$ ) provided in Appendix B or site-specific methane destruction efficiencies. Site-specific methane destruction efficiencies must be determined using an ARB approved methodology.

### Equation 5.20: Uncombusted Methane Emissions

$$PE_{UM} = \sum_i MM_i \times (1 - DE_i) \times GWP_{CH4}$$

Where,

$PE_{UM}$	=	Project emissions from uncombusted methane during the reporting period (tCO <sub>2</sub> e)
$i$	=	Use of methane (flaring, power generation, heat generation, production of transportation fuel, etc.) by all qualifying and non-qualifying devices
$MM_i$	=	Methane measured sent to use $i$ during the reporting period (tCH <sub>4</sub> )
$DE_i$	=	Efficiency of methane destruction device $i$ , either site-specific or from Appendix B (%)
$GWP_{CH4}$	=	Global warming potential of methane (tCO <sub>2</sub> e/tCH <sub>4</sub> )

With:

$$MM_i = \sum_i (PSW_{P,all,i} \times C_{CH4} + PIB_{P,i} \times C_{CH4} + PGW_{P,i} \times C_{CH4} - MG_{SUPP,i} \times C_{CH4MG}) \times 0.0423 \times 0.000454$$

Where,

$PSW_{P,all,i}$	=	Volume of MG from pre-mining surface wells sent to qualifying and non-qualifying devices for destruction through use $i$ during the reporting period. For qualifying devices, all MG, whether from a mined through well or not must be quantified (scf)
-----------------	---	---

$PIB_{P,i}$	=	Volume of MG from pre-mining in-mine boreholes sent to qualifying and non-qualifying devices for destruction through use i during the reporting period (scf)
$PGW_{P,i}$	=	Volume of MG from post-mining gob wells sent to qualifying and non-qualifying devices for destruction through use i during the reporting period (scf)
$C_{CH4}$	=	Measured methane concentration of mine gas captured from methane source (scf CH <sub>4</sub> /scf)
$MG_{SUPP,i}$	=	Volume of mine methane extracted from a methane drainage system and sent to destruction device with VAM(scfs)
$C_{CH4MG}$	=	Measured methane concentration of captured mine gas (scf CH <sub>4</sub> /scf)
0.0423	=	Density of methane (lb CH <sub>4</sub> /scf CH <sub>4</sub> )
0.000454	=	tCH <sub>4</sub> /lb CH <sub>4</sub>

- (l) If gas flow metering equipment does not internally correct for temperature and pressure, use Equation 5.21 to determine the amount of mine gas sent to each qualifying and non-qualifying device during the reporting period.

**Equation 5.21: MG Corrected for Temperature and Pressure**

$$MG_{corrected,i,y} = MG_{meas,i,y} \times \frac{520}{T_{MG,y}} \times \frac{P_{MG,y}}{1}$$

Where,

$MG_{corrected,i,y}$  = Corrected flow rate or total volume of MG collected for the time interval y at utilization type i, adjusted to 60°F and 1 atm (scf/unit of time)

$MG_{meas,i,y}$  = Measured flow rate or total volume of MG collected for the time interval y at utilization type i (scf/unit of time)

$T_{MG,y}$  = Measured temperature of the MG for the time interval y, °R=°F+460 (°R)

$P_{MG,y}$  = Measured pressure of the MG for the time interval y (atm)

**§ 5.3. Active Surface Mine Methane Drainage Activities.**

- (a) GHG emission reductions for a reporting period (ER) must be quantified by subtracting the project emissions for that reporting period (PE) from the baseline emissions for that reporting period (BE) using Equation 5.22.

**Equation 5.22: GHG Emission Reductions**

$$ER = BE - PE$$

Where,

<i>ER</i>	=	Emission reductions achieved by the project during the reporting period (tCO <sub>2</sub> e)
<i>BE</i>	=	Baseline emissions during the reporting period (tCO <sub>2</sub> e)
<i>PE</i>	=	Project emissions during the reporting period (tCO <sub>2</sub> e)

### § 5.3.1. Quantifying Baseline Emissions.

- (a) Baseline emissions for a reporting period (*BE*) must be estimated by summing the baseline emissions for all SSRs identified as included in the baseline in Table 4.3 and using Equation 5.23.

#### Equation 5.23: Baseline Emissions

$$BE = BE_{MD} + BE_{MR}$$

Where,

<i>BE</i>	=	Baseline emissions during the reporting period (tCO <sub>2</sub> e)
<i>BE<sub>MD</sub></i>	=	Baseline emissions from destruction of methane during the reporting period (tCO <sub>2</sub> e)
<i>BE<sub>MR</sub></i>	=	Baseline emissions from release of methane into the atmosphere avoided by the project during the reporting period (tCO <sub>2</sub> e)

- (b) Baseline emissions from the destruction of SMM (*BE<sub>MD</sub>*) must be quantified using Equation 5.24.
- (c) *BE<sub>MD</sub>* must include the estimated CO<sub>2</sub> emissions from the destruction of SMM in non-qualifying devices.
- (d) Mine gas (MG) can originate from five distinct sources for active surface mine methane drainage activities: pre-mining surface wells, pre-mining in-mine boreholes, existing coal bed methane (CBM) wells that would otherwise be shut-in and abandoned as a result of encroaching mining, abandoned wells that are re-activated, and converted dewatering wells. MG from these sources must be measured and accounted for individually per the equations in this section.
- (e) For each eligible methane source, the volume of MG destroyed in the baseline must be determined by calculating and comparing:
- (1) The volume of MG destroyed by non-qualifying devices during the reporting period, adjusted for temperature and pressure, if applicable, using Equation 5.35; and

- (2) The volume of MG destroyed by non-qualifying devices during the three-year period prior to offset project commencement (or during the length of time the devices are operational, if less than three years), adjusted for temperature and pressure, if applicable, using Equation 5.35 and averaged according to the length of the reporting period.
- (f) For each methane source, the larger of the two above quantities must be used in Equation 5.24.
- (g) For the purpose of baseline quantification, only non-qualifying devices that were operating during the year prior to offset project commencement should be taken into account.
- (h) If there is no destruction of methane in the baseline, then  $BE_{MD} = 0$ .

**Equation 5.24: Baseline Emissions from Destruction of Methane**

$$BE_{MD} = \sum_i (PSW_{B,i} \times C_{CH4} + PIB_{B,i} \times C_{CH4} + ECW_{B,i} \times C_{CH4} + AWR_{B,i} \times C_{CH4} + CDW_{B,i} \times C_{CH4}) \times 0.0423 \times 0.000454 \times CEF_{CH4}$$

Where,

- $BE_{MD}$  = Baseline emissions from destruction of methane during the reporting period (tCO<sub>2</sub>e)
- $i$  = Use of methane (flaring, power generation, heat generation, production of transportation fuel, injection into natural gas pipeline, etc.)
- $PSW_{B,i}$  = Volume of MG from pre-mining surface wells that would have been sent to non-qualifying devices for destruction through use  $i$  during the reporting period in the baseline scenario (scf)
- $PIB_{B,i}$  = Volume of MG from pre-mining in-mine boreholes that would have been sent to non-qualifying devices for destruction through use  $i$  during the reporting period in the baseline scenario (scf)
- $ECW_{B,i}$  = Volume of MG from existing coalbed methane wells that would otherwise be shut-in and abandoned as a result of encroaching mining that would have been sent to non-qualifying devices for destruction through use  $i$  during the reporting period in the baseline scenario (scf)
- $AWR_{B,i}$  = Volume of MG from abandoned wells that are reactivated that would have been sent to non-qualifying devices for destruction through use  $i$  during the reporting period in the baseline scenario (scf)

$CDW_{B,i}$	=	Volume of MG from converted dewatering wells that would have been sent to non-qualifying devices for destruction through use $i$ during the reporting period in the baseline scenario (scf)
$C_{CH_4}$	=	Measured methane concentration of mine gas captured from methane source (scf CH <sub>4</sub> /scf)
0.0423	=	Density of methane (lb CH <sub>4</sub> /scf CH <sub>4</sub> )
0.000454	=	tCH <sub>4</sub> /lb CH <sub>4</sub>
$CEF_{CH_4}$	=	CO <sub>2</sub> emission factor for combusted methane (2.75 tCO <sub>2</sub> e/tCH <sub>4</sub> )

- (i) Baseline emissions from the release of methane ( $BE_{MR}$ ) must be quantified using Equation 5.25.
- (j)  $BE_{MR}$  must account for the total amount of methane actually destroyed by all qualifying and non-qualifying devices.
- (k) Emissions from the release of methane are only accounted for in the baseline during the reporting period(s) in which the emissions would have occurred (i.e., when the well is mined through). With the exception of pre-mining in-mine boreholes, all other methane sources must demonstrate that the well is mined through. For the purposes of this protocol, a well at an active surface mine is considered mined through when either of the following occurs:
  - (1) The well is physically bisected by surface mining activities, such as excavation of overburden, drilling and blasting, and removal of the coal.
  - (2) The well produces elevated amounts of atmospheric gases (the percent concentration of nitrogen in mine gas increases by five compared to baseline levels). A full gas analysis using a gas chromatograph must be completed by an ISO 17025 accredited lab. To ensure that elevated nitrogen levels are the result of a well being mined through and not the result of a leak in the well, the gas analysis must show that oxygen levels did not increase by the same proportion as the nitrogen levels.
- (l) If using the first option to demonstrate that a well is mined through, an up-to-date mine plan must be used to identify which wells were mined through and therefore eligible for baseline quantification in any given reporting period.
- (m) If the mine plan calls for mining past rather than through a borehole, SMM from that borehole is eligible for quantification in the baseline when the linear distance

between the endpoint of the borehole and the working face that will pass nearest the endpoint of the borehole has reached an absolute minimum.

- (n) SMM that is still vented in the project scenario is not accounted for in the project emissions or baseline emissions, since it is vented in both scenarios.

**Equation 5.25: Baseline Emissions from Release of Methane**

$$BE_{MR} = \sum_i [ (PSW_{P,i} - PSW_{B,i}) \times C_{CH4} + (PIB_{P,i} - PIB_{B,i}) \times C_{CH4} + (ECW_{P,i} - ECW_{B,i}) \times C_{CH4} + (AWR_{P,i} - AWR_{B,i}) \times C_{CH4} + (CDW_{P,i} - CDW_{B,i}) \times C_{CH4} ] \times 0.0423 \times 0.000454 \times GWP_{CH4}$$

Where,

- $BE_{MR}$  = Baseline emissions from release of methane into the atmosphere avoided by the project during the reporting period (tCO<sub>2</sub>e)
- $i$  = Use of methane (flaring, power generation, heat generation, production of transportation fuel, injection into natural gas pipeline, etc.) by all qualifying and non-qualifying devices
- $PSW_{P,i}$  = Volume of MG from pre-mining surface wells sent to qualifying and non-qualifying devices for destruction through use  $i$  during the reporting period. For qualifying devices, only the eligible amount per Equation 5.26 in accordance with sections 5.3.1(k), (l), and (m) must be quantified (scf)
- $PSW_{B,i}$  = Volume of MG from pre-mining surface wells that would have been sent to non-qualifying devices for destruction through use  $i$  during the reporting period in the baseline scenario (scf)
- $PIB_{P,i}$  = Volume of MG from pre-mining in-mine boreholes sent to qualifying and non-qualifying devices for destruction through use  $i$  during the reporting period (scf)
- $PIB_{B,i}$  = Volume of MG from pre-mining surface wells that would have been sent to non-qualifying devices for destruction through use  $i$  during the reporting period in the baseline scenario (scf)
- $ECW_{P,i}$  = Volume of MG from existing coal bed methane wells that would otherwise be shut-in and abandoned as a result of encroaching mining sent to qualifying and non-qualifying devices for destruction through use  $i$  during the reporting period. For qualifying devices, only the eligible amount per Equation 5.27 in accordance with sections 5.3.1(k), (l), and (m) must be quantified (scf)
- $ECW_{B,i}$  = Volume of MG from existing coal bed methane wells that would otherwise be shut-in and abandoned as a result of encroaching mining

that would have been sent to non-qualifying devices for destruction through use  $i$  during the reporting period in the baseline scenario (scf)

$AWR_{P,i}$  = Volume of MG from abandoned wells that are reactivated sent to qualifying and non-qualifying devices for destruction through use  $i$  during the reporting period. For qualifying devices, only the eligible amount per Equation 5.28 in accordance with sections 5.3.1(k), (l), and (m) must be quantified (scf)

$AWR_{B,i}$  = Volume of MG from abandoned wells that are reactivated that would have been sent to non-qualifying devices for destruction through use  $i$  during the reporting period in the baseline scenario (scf)

$CDW_{P,i}$  = Volume of MG from converted dewatering wells sent to qualifying and non-qualifying devices for destruction through use  $i$  during the reporting period. For qualifying devices, only the eligible amount per Equation 5.29 in accordance with sections 5.3.1(k), (l), and (m) must be quantified (scf)

$CDW_{B,i}$  = Volume of MG from converted dewatering wells that would have been sent to non-qualifying devices for destruction through use  $i$  during the reporting period in the baseline scenario (scf)

$C_{CH_4}$  = Measured methane concentration of mine gas captured from methane source (scf  $CH_4$ /scf)

0.0423 = Density of methane (lb  $CH_4$ /scf  $CH_4$ )

0.000454 = t $CH_4$ /lb  $CH_4$

$GWP_{CH_4}$  = Global warming potential of methane (t $CO_2e$ /t $CH_4$ )

With,

$$PSW_{P,i} = PSWe_i + PSWnqd_i$$

Where,

$PSWe_i$  = Volume of MG from pre-mining surface wells sent to qualifying devices for destruction through use  $i$  that is eligible for quantification in the reporting period. Quantified using Equation 5.26. (scf)

$PSWnqd_i$  = Volume of MG from pre-mining surface wells sent to non-qualifying devices for destruction through use  $i$  during the reporting period (scf)

And,

$$ECW_{P,i} = ECWe_i + ECWnqd_i$$

Where,



$ECWe_i$  = Volume of MG from existing coal bed methane wells that would otherwise be shut-in and abandoned as a result of encroaching mining sent to qualifying devices for destruction through use  $i$  that is eligible for quantification in the reporting period. Quantified using Equation 5.27. (scf)

$ECWnqd_i$  = Volume of MG from existing coal bed methane wells that would otherwise be shut-in and abandoned as a result of encroaching mining sent to non-qualifying devices for destruction through use  $i$  during the reporting period (scf)

And,

$$AWR_{P,i} = AWRe_i + AWRnqd_i$$

Where,

$AWRe_i$  = Volume of MG from abandoned wells that are reactivated sent to qualifying devices for destruction through use  $i$  that is eligible for quantification in the reporting period. Quantified using Equation 5.28. (scf)

$AWRnqd_i$  = Volume of MG from abandoned wells that are reactivated sent to non-qualifying devices for destruction through use  $i$  during the reporting period (scf)

And,

$$CDW_{P,i} = CDWe_i + CDWnqd_i$$

Where,

$CDWe_i$  = Volume of MG from converted dewatering wells sent to qualifying devices for destruction through use  $i$  that is eligible for quantification in the reporting period. Quantified using Equation 5.29. (scf)

$CDWnqd_i$  = Volume of MG from converted dewatering wells sent to non-qualifying devices for destruction through use  $i$  during the reporting period (scf)

- (o) The eligible amount of MG destroyed by qualifying devices must be determined by using Equations 5.26, 5.27, 5.28 and 5.29.

**Equation 5.26: Eligible MG from Pre-mining Surface Wells**

$$PSWe_i = PSWe_{pre,i} + PSWe_{post,i}$$

Where,

$PSWe_i$  = Volume of MG from pre-mining surface wells sent to qualifying devices for destruction through use  $i$  that is eligible for quantification in the reporting period using Equation 5.25 (scf)

$i$  = Use of methane (flaring, power generation, heat generation, production of transportation fuel, injection into natural gas pipeline, etc.) by all qualifying devices

$PSWe_{pre,i}$  = Volume of MG sent to qualifying destruction devices, from the offset project commencement date through the end of the current reporting period, captured from pre-mining surface wells that were mined through during the current reporting period (scf)

$PSWe_{post,i}$  = Volume of MG sent to qualifying destruction devices in the current reporting period captured from pre-mining surface wells that were mined through during earlier reporting periods (scf)

**Equation 5.27: Eligible MG from Existing Coal Bed Methane Wells that Would Otherwise Be Shut-in and Abandoned as a Result of Encroaching Mining**

$$ECWe_i = ECWe_{pre,i} + ECWe_{post,i}$$

Where,

$ECWe_i$  = Volume of MG from existing coal bed methane wells that would otherwise be shut-in and abandoned as a result of encroaching mining sent to qualifying devices for destruction through use  $i$  that is eligible for quantification in the reporting period using Equation 5.25 (scf)

$i$  = Use of methane (flaring, power generation, heat generation, production of transportation fuel, injection into natural gas pipeline, etc.) by all qualifying devices

$ECWe_{pre,i}$  = Volume of MG sent to qualifying destruction devices, from the offset project commencement date through the end of the current reporting

period, captured from existing coal bed methane wells that would otherwise be shut-in and abandoned as a result of encroaching mining that were mined through during the current reporting period (scf)

$ECWe_{post,i}$  = Volume of MG sent to qualifying destruction devices in the current reporting period captured from existing coal bed methane wells that would otherwise be shut-in and abandoned as a result of encroaching mining that were mined through during earlier reporting periods (scf)

**Equation 5.28: Eligible MG from Abandoned Wells that are Reactivated**

$$AWRe_j = AWE_{pre,i} + AWRe_{post,i}$$

Where,

$AWRe_j$  = Volume of MG from abandoned wells that are reactivated sent to qualifying devices for destruction through use  $i$  that is eligible for quantification in the reporting period using Equation 5.25 (scf)

$i$  = Use of methane (flaring, power generation, heat generation, production of transportation fuel, injection into natural gas pipeline, etc.) by all qualifying devices

$AWE_{pre,i}$  = Volume of MG sent to qualifying destruction devices, from the offset project commencement date through the end of the current reporting period, captured from abandoned wells that are reactivated that were mined through during the current reporting period (scf)

$AWRe_{post,i}$  = Volume of MG sent to qualifying destruction devices in the current reporting period captured from abandoned wells that are reactivated that were mined through during earlier reporting periods (scf)

**Equation 5.29: Eligible MG from Converted Dewatering Wells that are Reactivated**

$$CDWe_i = CDWe_{pre,i} + CDWe_{post,i}$$

Where,

$CDWe_i$	=	Volume of MG from converted dewatering wells sent to qualifying devices for destruction through use $i$ that is eligible for quantification in the reporting period using Equation 5.25 (scf)
$i$	=	Use of methane (flaring, power generation, heat generation, production of transportation fuel, injection into natural gas pipeline, etc.) by all qualifying devices
$CDWe_{pre,i}$	=	Volume of MG sent to qualifying destruction devices, from the offset project commencement date through the end of the current reporting period, captured from converted dewatering wells that were mined through during the current reporting period (scf)
$CDWe_{post,i}$	=	Volume of MG sent to qualifying destruction devices in the current reporting period captured from converted dewatering wells that were mined through during earlier reporting periods (scf)

### § 5.3.2 Quantifying Project Emissions.

- (a) Project emissions must be quantified on an annual basis.
- (b) Project emissions for a reporting period (PE) must be quantified by summing the emissions for all SSRs identified as included in the project in Table 4.3 and using Equation 5.30.
- (c) SMM that is still vented in the project scenario is not accounted for in the project emissions or baseline emissions, since it is vented in both scenarios.

#### Equation 5.30: Project Emissions

$$PE = PE_{EC} + PE_{MD} + PE_{UM}$$

Where,

$PE$	=	Project emissions during the reporting period (tCO <sub>2</sub> e)
$PE_{EC}$	=	Project emissions from energy consumed to capture and destroy methane during the reporting period (tCO <sub>2</sub> e)
$PE_{MD}$	=	Project emissions from destruction of methane during the reporting period (tCO <sub>2</sub> e)
$PE_{UM}$	=	Project emissions from uncombusted methane during the reporting period (tCO <sub>2</sub> e)

- (d) If the project uses fossil fuel or grid electricity to power additional equipment required for project activities, the resulting CO<sub>2</sub> emissions from the energy consumed to capture and destroy methane (PE<sub>EC</sub>) must be quantified using Equation 5.31.
- (e) If the total electricity generated by project activities is greater than the additional electricity consumed for the capture and destruction of methane, then the CONS<sub>ELEC</sub> term may be omitted from Equation 5.31.

**Equation 5.31: Project Emissions from Energy Consumed to Capture and Destroy Methane**

$$PE_{EC} = (CONS_{ELEC} \times CEF_{ELEC}) + \frac{(CONS_{HEAT} \times CEF_{HEAT} + CONS_{FF} \times CEF_{FF})}{1000}$$

Where,

- PE<sub>EC</sub> = Project emissions from energy consumed to capture and destroy methane during the reporting period (tCO<sub>2</sub>e)
- CONS<sub>ELEC</sub> = Additional electricity consumption for the capture and destruction of methane during the reporting period (MWh)
- CEF<sub>ELEC</sub> = CO<sub>2</sub> emission factor of electricity used from Appendix A (tCO<sub>2</sub>e/MWh)
- CONS<sub>HEAT</sub> = Additional heat consumption for the capture and destruction of methane during the reporting period (volume)
- CEF<sub>HEAT</sub> = CO<sub>2</sub> emission factor of heat used from Appendix A (kg CO<sub>2</sub>/volume)
- CONS<sub>FF</sub> = Additional fossil fuel consumption for the capture and destruction of methane during the reporting period (volume)
- CEF<sub>FF</sub> = CO<sub>2</sub> emission factor of fossil fuel used from Appendix A (kg CO<sub>2</sub>/volume)
- 1/1000 = Conversion of kg to metric tons

- (f) Project emissions from the destruction of methane (PE<sub>MD</sub>) must be quantified using Equations 5.32 and 5.33.
- (g) Project emissions must include the CO<sub>2</sub> emissions resulting from the destruction of SMM that took place during the reporting period regardless of whether or not the well is mined through by the end of the reporting period.

**Equation 5.32: Project Emissions from Destruction of SMM**

$$PE_{MD} = \sum_i MD_i \times CEF_{CH4}$$

Where,

$PE_{MD}$	=	Project emissions from destruction of methane during the reporting period (tCO <sub>2</sub> e)
$i$	=	Use of methane (flaring, power generation, heat generation, production of transportation fuel, injection into natural gas pipeline, etc.) by all qualifying and non-qualifying devices
$MD_i$	=	Methane destroyed by use $i$ during the reporting period (tCH <sub>4</sub> )
$CEF_{CH4}$	=	CO <sub>2</sub> emission factor for combusted methane (2.75 tCO <sub>2</sub> e/tCH <sub>4</sub> )

- (h) The amount of mine methane destroyed ( $MD_i$ ) must be quantified using Equation 5.33.
- (i) Offset Project Operators and Authorized Project Designees may choose to use default methane destruction efficiencies ( $DE_i$ ) provided in Appendix B or site-specific methane destruction efficiencies. Site-specific methane destruction efficiencies must be determined using an ARB approved methodology.

**Equation 5.33: Methane Destroyed**

$$MD_i = \sum_i MM_i \times DE_i$$

Where,

$MD_i$	=	Methane destroyed by use $i$ during the reporting period (tCH <sub>4</sub> )
$i$	=	Use of methane (flaring, power generation, heat generation, production of transportation fuel, injection into natural gas pipeline, etc.) by all qualifying and non-qualifying devices
$MM_i$	=	Methane measured sent to use $i$ during the reporting period corrected to standard conditions, if applicable, for pressure and temperature (tCH <sub>4</sub> )
$DE_i$	=	Efficiency of methane destruction device $i$ , either site-specific or from Appendix B (%)

With:

$$MM_i = \sum_i (PSW_{P,all,i} \times C_{CH4} + PIB_{P,i} \times C_{CH4} + ECW_{P,all,i} \times C_{CH4} \times AWR_{P,all,i} \times C_{CH4} \times CDW_{P,all,i} \times C_{CH4}) \times 0.0423 \times 0.000454$$

Where,

$PSW_{P,all,i}$	=	Volume of MG from pre-mining surface wells sent to qualifying and non-qualifying devices for destruction through use $i$ during the reporting period. For qualifying devices, all MG, whether from a mined through well or not, must be quantified (scf)
$PIB_{P,i}$	=	Volume of MG from pre-mining in-mine boreholes sent to qualifying and non-qualifying devices for destruction through use $i$ during the reporting period (scf)
$ECW_{P,all,i}$	=	Volume of MG from existing coal bed methane wells that would otherwise be shut-in and abandoned as a result of encroaching mining sent to qualifying and non-qualifying devices for destruction through use $i$ during the reporting period. For qualifying devices, all MG, whether from a mined through well or not, must be quantified (scf)
$AWR_{P,all,i}$	=	Volume of MG from abandoned wells that are reactivated sent to qualifying and non-qualifying devices for destruction through use $i$ during the reporting period. For qualifying devices, all MG, whether from a mined through well or not, must be quantified (scf)
$CDW_{P,all,i}$	=	Volume of MG from converted dewatering wells sent to qualifying and non-qualifying devices for destruction through use $i$ during the reporting period. For qualifying devices, all MG, whether from a mined through well or not, must be quantified (scf)
$C_{CH_4}$	=	Measured methane concentration of mine gas captured from methane source (scf CH <sub>4</sub> /scf)
0.0423	=	Density of methane (lb CH <sub>4</sub> /scf CH <sub>4</sub> )
0.000454	=	tCH <sub>4</sub> /lb CH <sub>4</sub>

- (j) Project emissions from uncombusted methane ( $PE_{UM}$ ) must be quantified using Equation 5.34.
- (k) Offset Project Operators and Authorized Project Designees may choose to use default methane destruction efficiencies ( $DE_i$ ) provided in Appendix B or site-specific methane destruction efficiencies. Site-specific methane destruction efficiencies must be determined using an ARB approved methodology.

**Equation 5.34: Uncombusted Methane Emissions**

$$PE_{UM} = \sum_i MM_i \times (1 - DE_i) \times GWP_{CH_4}$$

Where,

$PE_{UM}$  = Project emissions from uncombusted methane during the reporting period (tCO<sub>2e</sub>)

- $i$  = Use of methane (flaring, power generation, heat generation, production of transportation fuel, injection into natural gas pipeline, etc.) by all qualifying and non-qualifying devices
- $MM_i$  = Methane measured sent to use  $i$  during the reporting period (tCH<sub>4</sub>)
- $DE_i$  = Efficiency of methane destruction device  $i$ , either site-specific or from Appendix B (%)
- $GWP_{CH_4}$  = Global warming potential of methane (tCO<sub>2e</sub>/tCH<sub>4</sub>)

With,

$$MM_i = \sum_i (PSW_{P,all,i} \times C_{CH_4} + PIB_{P,i} \times C_{CH_4} + ECW_{P,all,i} \times C_{CH_4} \times AWR_{P,all,i} \times C_{CH_4} \times CDW_{P,all,i} \times C_{CH_4}) \times 0.0423 \times 0.000454$$

Where,

- $PSW_{P,all,i}$  = Volume of MG from pre-mining surface wells sent to qualifying and non-qualifying devices for destruction through use  $i$  during the reporting period. For qualifying devices, all MG, whether from a mined through well or not, must be quantified (scf)
- $PIB_{P,i}$  = Volume of MG from pre-mining in-mine boreholes sent to qualifying and non-qualifying devices for destruction through use  $i$  during the reporting period (scf)
- $ECW_{P,all,i}$  = Volume of MG from existing coal bed methane wells that would otherwise be shut-in and abandoned as a result of encroaching mining sent to qualifying and non-qualifying devices for destruction through use  $i$  during the reporting period. For qualifying devices, all MG, whether from a mined through well or not, must be quantified (scf)
- $AWR_{P,all,i}$  = Volume of MG from abandoned wells that are reactivated sent to qualifying and non-qualifying devices for destruction through use  $i$  during the reporting period. For qualifying devices, all MG, whether from a mined through well or not, must be quantified (scf)
- $CDW_{P,all,i}$  = Volume of MG from converted dewatering wells sent to qualifying and non-qualifying devices for destruction through use  $i$  during the reporting period. For qualifying devices, all MG, whether from a mined through well or not, must be quantified (scf)
- $C_{CH_4}$  = Measured methane concentration of mine gas captured from methane source (scf CH<sub>4</sub>/scf)
- 0.0423 = Density of methane (lb CH<sub>4</sub>/scf CH<sub>4</sub>)
- 0.000454 = tCH<sub>4</sub>/lb CH<sub>4</sub>



- (l) If gas flow metering equipment does not internally correct for temperature and pressure, use Equation 5.35 to determine the amount of mine gas sent to each qualifying and non-qualifying device during the reporting period.

**Equation 5.35: MG Corrected for Temperature and Pressure**

$$MG_{corrected,i,y} = MG_{meas,i,y} \times \frac{520}{T_{MG,y}} \times \frac{P_{MG,y}}{1}$$

Where,

$MG_{corrected,i,y}$  = Corrected flow rate or total volume of MG collected for the time interval y at utilization type i, adjusted to 60°F and 1 atm (scf/unit of time)

$MG_{meas,i,y}$  = Measured flow rate or total volume of MG collected for the time interval y at utilization type i (scf/unit of time)

$T_{MG,y}$  = Measured temperature of the MG for the time interval y, °R=°F+460 (°R)

$P_{MG,y}$  = Measured pressure of the MG for the time interval y (atm)

**§ 5.4. Abandoned Underground Mine Methane Recovery Activities.**

- (a) GHG emission reductions for a reporting period (ER) must be quantified by subtracting the project emissions for that reporting period (PE) from the baseline emissions for that reporting period (BE) and applying an uncertainty deduction (UD) using Equation 5.36.

**Equation 5.36: GHG Emission Reductions**

$$ER = (BE - PE) \times UD$$

Where,

$ER$  = Emission reductions achieved by the project during the reporting period (tCO<sub>2</sub>e)

$BE$  = Baseline emissions during the reporting period (tCO<sub>2</sub>e)

$PE$  = Project emissions during the reporting period (tCO<sub>2</sub>e)

$UD$  = Uncertainty deduction; UD = 0.8 if using default hyperbolic decline curve coefficients, UD = 1 if using hyperbolic decline curve coefficients derived from measured data from pre-existing wells or boreholes open to the atmosphere

### § 5.4.1 Quantifying Baseline Emissions.

- (a) Baseline emissions for a reporting period (BE) must be estimated by summing the baseline emissions for all SSRs identified as included in the baseline in Table 4.4 and using Equation 5.37.
- (b) The emission reductions in any given reporting period must be equal to or less than the baseline emissions for that reporting period.

#### Equation 5.37: Baseline Emissions

$$BE = BE_{MD} + BE_{MR}$$

Where,

- $BE$  = Baseline emissions during the reporting period (tCO<sub>2</sub>e)
- $BE_{MD}$  = Baseline emissions from destruction of methane during the reporting period (tCO<sub>2</sub>e)
- $BE_{MR}$  = Baseline emissions from release of methane into the atmosphere avoided by the project during the reporting period (tCO<sub>2</sub>e)

- (c) Baseline emissions from the destruction of AMM ( $BE_{MD}$ ) must be quantified using Equations 5.38 and 5.39.
- (d)  $BE_{MD}$  must include the estimated CO<sub>2</sub> emissions from the destruction of AMM in non-qualifying devices.
- (e) Mine gas (MG) can originate from four distinct sources for abandoned underground mine methane recovery activities: pre-mining surface wells drilled into the mine during active mining operations, pre-mining in-mine boreholes drilled into the mine during active mining operations, post-mining gob wells drilled into the mine during active mining operations, and newly drilled surface wells. MG from these sources must be measured and accounted for individually per the equations in this section.
- (f) For each eligible methane source, the volume of MG destroyed in the baseline must be determined by calculating and comparing:
  - (1) The volume of MG captured and destroyed by non-qualifying devices during the reporting period, adjusted for temperature and pressure, if applicable, using Equation 5.48; and
  - (2) The volume of MG captured and destroyed by non-qualifying devices during the three-year period prior to offset project commencement (or

during the length of time the devices are operational, if less than three years), adjusted for temperature and pressure, if applicable, using Equation 5.48 and averaged according to the length of the reporting period.

- (g) For each methane source, the larger of the two above quantities must be used in Equation 5.39.
- (h) For the purpose of baseline quantification, only non-qualifying devices that were operating during the year prior to offset project commencement should be taken into account.
- (i) If there is no destruction of methane in the baseline, then  $BE_{MD} = 0$ .

**Equation 5.38: Baseline Emissions from Destruction of Methane**

$$BE_{MD} = MD_{B,i} \times CEF_{CH4}$$

Where,

$BE_{MD}$  = Baseline emissions from destruction of methane during the reporting period (tCO<sub>2</sub>e)

$i$  = Use of methane (flaring, power generation, heat generation, production of transportation fuel, injection into natural gas pipeline, etc.)

$MD_{B,i}$  = Methane destroyed by non-qualifying devices through use  $i$  during the reporting period (tCH<sub>4</sub>)

$CEF_{CH4}$  = CO<sub>2</sub> emission factor for combusted methane (2.75 tCO<sub>2</sub>e/tCH<sub>4</sub>)

- (j) The amount of mine methane destroyed ( $MD_{B,i}$ ) must be quantified using Equation 5.39.
- (k) Offset Project Operators and Authorized Project Designees may choose to use default methane destruction efficiencies ( $DE_i$ ) provided in Appendix B or site-specific methane destruction efficiencies. Site-specific methane destruction efficiencies must be determined using an ARB approved methodology.

**Equation 5.39: Methane Destroyed in Baseline**

$$MD_{B,i} = \sum_i MM_{B,i} \times DE_i$$

Where,

$MD_{B,i}$  = Methane destroyed by use  $i$  during the reporting period (tCH<sub>4</sub>)

$i$	= Use of methane (flaring, power generation, heat generation, production of transportation fuel, injection into natural gas pipeline, etc.) by non-qualifying devices
$MM_{B,i}$	= Methane measured sent to use $i$ during the reporting period corrected to standard conditions, if applicable, for pressure and temperature (tCH <sub>4</sub> )
$DE_i$	= Efficiency of methane destruction device $i$ (%)
With:	
$MM_i$	$= \sum_i (PSW_{B,i} \times C_{CH_4} + PIB_{B,i} \times C_{CH_4} + PGW_{B,i} \times C_{CH_4} + NSW_{B,i} \times C_{CH_4}) \times 0.0423 \times 0.000454$
Where,	
$PSW_{B,i}$	= Volume of MG from pre-mining surface wells sent to non-qualifying devices for destruction through use $i$ during the reporting period (scf)
$PIB_{B,i}$	= Volume of MG from pre-mining in-mine boreholes sent to non-qualifying devices for destruction through use $i$ during the reporting period (scf)
$PGW_{B,i}$	= Volume of MG from post-mining gob wells sent to non-qualifying devices for destruction through use $i$ during the reporting period (scf)
$NSW_{B,i}$	= Volume of MG from newly drilled surface wells sent to non-qualifying devices for destruction through use $i$ during the reporting period (scf)
$C_{CH_4}$	= Measured methane concentration of mine gas captured from methane source (scf CH <sub>4</sub> /scf)
0.0423	= Density of methane (lb CH <sub>4</sub> /scf CH <sub>4</sub> )
0.000454	= tCH <sub>4</sub> /lb CH <sub>4</sub>

- (l) Baseline emissions from the release of methane (BE<sub>MR</sub>) must be quantified using Equations 5.40 and 5.41. Calculations include the application of a hyperbolic emissions rate decline curve. The function is directly related the gassiness of the mine, which is reflective of physical parameters of the coal mine such as the mine size, gas content of the coal, permeability of the coal to the flow of gas.
- (m) The decline curve estimates the emission rate of an abandoned mine over time by taking into account the time elapsed since mine closure, the methane emissions at the time of mine closure according to MSHA, and whether the mine

is sealed or venting. The decline curve for a given mine is initialized at the date of abandonment and extrapolated through the crediting period.

- (n) The amount of AMM released (tCH<sub>4</sub>) must be determined by calculating and comparing:
  - (1) The emissions of methane for that reporting period calculated by the decline curve using Equation 5.41; and
  - (2) The quantity of methane destroyed by qualifying and non-qualifying devices during that reporting period calculated using Equation 5.46.
- (o) The lesser of the two above quantities must be used in Equation 5.40
- (p) AMM that is still vented in the project scenario is not accounted for in the project emissions or baseline emissions, since it is vented in both scenarios.

**Equation 5.40: Baseline Emissions from Release of Methane**

$$BE_{MR} = \left[ \sum_i \min (AMM_{DC}, MD_{P,i}) - MD_{B,i} \right] \times GWP_{CH_4}$$

Where,

- $BE_{MR}$  = Baseline emissions from release of methane into the atmosphere avoided by the project during the reporting period (tCO<sub>2</sub>e)
- $i$  = Use of methane (flaring, power generation, heat generation, production of transportation fuel, injection into natural gas pipeline, etc.) by all qualifying and non-qualifying devices
- $AMM_{DC}$  = Emissions of methane during the reporting period as calculated by the decline curve
- $MD_{P,i}$  = Methane sent to all qualifying and non-qualifying devices for destruction through use  $i$  during the reporting period (tCH<sub>4</sub>)
- $MD_{B,i}$  = Methane sent to non-qualifying devices for destruction through use  $i$  during the reporting period
- $GWP_{CH_4}$  = Global warming potential of methane (tCO<sub>2</sub>e/tCH<sub>4</sub>)

**Equation 5.41: Methane Emissions Derived from the Hyperbolic Emission Rate Decline Curve**

$$AMM_{DC} = ER_{AMM,to} \times 0.0423 \times S \times \left( 1 + b \times D_i \times t \right)^{\left( \frac{-1}{b} \right)}$$

Where,

$AMM_{DC}$	= Emissions of methane from the decline curve during the reporting period (tCH <sub>4</sub> )
$ER_{AMM,t}$	= Emission rate of AMM at the time of mine closure (mscf/d)
$S$	= Default effective degree of sealing; $S = 1$ for venting mines and 0.5 for sealed mines
$b$	= Dimensionless hyperbolic exponent
$D_i$	= Initial decline rate (1/day)
$t$	= Time elapsed from the date of mine closure to midpoint of the reporting period (days)

- (q) The decline curve relies upon hyperbolic decline curve coefficients. Offset Project Operators or Authorized Project Designees may elect to:
- (1) use the default hyperbolic decline curve coefficients presented in Table 5.1 based upon whether the mine is venting or sealed; or

**Table 5.1: Default Hyperbolic Decline Curve Coefficients**

Variable	Venting	Sealed
$b$	1.886581	2.016746
$D_i$ (1/day)	0.003519	0.000835

- (2) derive hyperbolic decline curve coefficients using measured data from pre-existing wells or boreholes open to the atmosphere.
- (r) To derive hyperbolic emission rate decline curve coefficients using measured data from pre-existing wells or boreholes open to the atmosphere an Offset Project Operator or Authorized Project Designee must do the following:
- (1) Obtain a methane emission rate at time of mine closure that is available through published sources (i.e., MSHA, EPA).
  - (2) After mine closure, three parameters must be monitored:
    - (A) MG flow rates;
    - (B) local barometric pressure; and
    - (C) methane concentration of MG

- (3) Measurements must be of natural flow only with no assist from vacuum pumps or compressors.
- (4) If gas flow metering equipment does not internally correct for temperature and pressure, apply Equation 5.42 to the flow rate of mine gas venting from pre-existing wells or boreholes open to the atmosphere

**Equation 5.42: Emissions Rate Corrected for Temperature and Pressure**

$$ER_{corrected,y} = ER_{meas,y} \times \frac{520}{T_{MG,y}} \times \frac{P_{MG,y}}{1}$$

Where,

- $ER_{corrected,y}$  = Emissions rate of MG venting from pre-existing wells or boreholes open to the atmosphere during time interval y adjusted to 60°F and 1 atm (scf/unit of time)
- $ER_{meas,y}$  = Measured emission rate of MG venting from pre-existing wells or boreholes open to the atmosphere during time interval y (scf/unit of time)
- $T_{MG,y}$  = Measured temperature of the MG for the time interval y, °R=°F+460 (°R)
- $P_{MG,y}$  = Measured pressure of the MG for the time interval y (atm)

- (5) The monitored data must be used to develop a correlation between barometric pressure and methane flow rate. Annual average barometric pressure at the site must then be used to normalize the annual methane flow rate.
- (6) This normalized flow rate must then be plotted against the time since mine closure in order to derive the hyperbolic emission rate decline curve by fitting the data to a curve in the form of Equation 5.41.

**§ 5.4.2. Quantifying Project Emissions.**

- (a) Project emissions must be quantified on an annual basis.
- (b) Project emissions for a reporting period (PE) must be quantified by summing the emissions for all SSRs identified as included in the project in Table 4.4 and using Equation 5.43.
- (c) AMM that is still vented in the project scenario is not accounted for in the project emissions or baseline emissions, since it is vented in both scenarios.

**Equation 5.43: Project Emissions**

$$PE = PE_{EC} + PE_{MD} + PE_{UM}$$

Where,

$PE$	=	Project emissions during the reporting period (tCO <sub>2</sub> e)
$PE_{EC}$	=	Project emissions from energy consumed to capture and destroy methane during the reporting period (tCO <sub>2</sub> e)
$PE_{MD}$	=	Project emissions from destruction of methane during the reporting period (tCO <sub>2</sub> e)
$PE_{UM}$	=	Project emissions from uncombusted methane during the reporting period (tCO <sub>2</sub> e)

- (d) If the project uses fossil fuel or grid electricity to power additional equipment required for project activities, the resulting CO<sub>2</sub> emissions from the energy consumed to capture and destroy methane ( $PE_{EC}$ ) must be quantified using Equation 5.44.
- (e) If the total electricity generated by project activities is greater than the additional electricity consumed for the capture and destruction of methane, then the  $CONS_{ELEC}$  term may be omitted from Equation 5.44.

**Equation 5.44: Project Emissions from Energy Consumed to Capture and Destroy Methane**

$$PE_{EC} = (CONS_{ELEC} \times CEF_{ELEC}) + \frac{(CONS_{HEAT} \times CEF_{HEAT} + CONS_{FF} \times CEF_{FF})}{1000}$$

Where,

$PE_{EC}$	=	Project emissions from energy consumed to capture and destroy methane during the reporting period (tCO <sub>2</sub> e)
$CONS_{ELEC}$	=	Additional electricity consumption for the capture and destruction of methane during the reporting period (MWh)
$CEF_{ELEC}$	=	CO <sub>2</sub> emission factor of electricity used from Appendix A (tCO <sub>2</sub> e/MWh)
$CONS_{HEAT}$	=	Additional heat consumption for the capture and destruction of methane during the reporting period (volume)
$CEF_{HEAT}$	=	CO <sub>2</sub> emission factor of heat used from Appendix A (kg CO <sub>2</sub> /volume)
$CONS_{FF}$	=	Additional fossil fuel consumption for the capture and destruction of methane during the reporting period (volume)
$CEF_{FF}$	=	CO <sub>2</sub> emission factor of fossil fuel used from Appendix A (kg CO <sub>2</sub> /volume)



1/1000 = Conversion of kg to metric tons

- (f) Project emissions from the destruction of methane ( $PE_{MD}$ ) must be quantified using Equations 5.45 and 5.46.

**Equation 5.45: Project Emissions from Destruction of Captured Methane**

$$PE_{MD} = \sum_i MD_{P,i} \times CEF_{CH_4}$$

Where,

$PE_{MD}$  = Project emissions from destruction of methane during the reporting period (tCO<sub>2</sub>e)

$i$  = Use of methane (flaring, power generation, heat generation production of transportation fuel, injection into natural gas pipeline, etc.) by all qualifying and non-qualifying devices

$MD_{P,i}$  = Methane destroyed by use  $i$  during the reporting period (tCH<sub>4</sub>)

$CEF_{CH_4}$  = CO<sub>2</sub> emission factor for combusted methane (2.75 tCO<sub>2</sub>e/tCH<sub>4</sub>)

- (g) The amount of mine methane destroyed ( $MD_{P,i}$ ) must be quantified using Equation 5.46.
- (h) Offset Project Operators and Authorized Project Designees may choose to use default methane destruction efficiencies ( $DE_i$ ) provided in Appendix B or site-specific methane destruction efficiencies. Site-specific methane destruction efficiencies must be determined using an ARB approved methodology.

**Equation 5.46: Methane Destroyed**

$$MD_{P,i} = \sum_i MM_{P,i} \times DE_i$$

Where,

$MD_{P,i}$  = Methane destroyed by use  $i$  during the reporting period (tCH<sub>4</sub>)

$i$  = Use of methane (flaring, power generation, heat generation, production of transportation fuel, injection into natural gas pipeline, etc.) by all qualifying and non-qualifying devices

$MM_{P,i}$  = Methane measured sent to qualifying and non-qualifying devices for destruction through use  $i$  during the reporting period corrected to standard conditions, if applicable, for pressure and temperature (tCH<sub>4</sub>)

$DE_i$  = Efficiency of methane destruction device  $i$ , either site-specific or from Appendix B (%)

With:

$$MM_{P,i} = \sum_i (PSW_{P,i} \times C_{CH4} + PIB_{P,i} \times C_{CH4} + PGW_{P,i} \times C_{CH4} + NSW_{P,i} \times C_{CH4}) \times 0.0423 \times 0.000454$$

Where,

$PSW_{P,i}$  = Volume of MG from pre-mining surface wells sent to qualifying and non-qualifying devices for destruction through use i during the reporting period.

$PIB_{P,i}$  = Volume of MG from pre-mining in-mine boreholes sent to qualifying and non-qualifying devices for destruction through use i during the reporting period (scf)

$PGW_{P,i}$  = Volume of MG from post-mining gob wells sent to qualifying and non-qualifying devices for destruction through use i during the reporting period (scf)

$NSW_{P,i}$  = Volume of MG from newly drilled surface wells sent to qualifying and non-qualifying devices for destruction through use i during the reporting period (scf)

$C_{CH4}$  = Measured methane concentration of mine gas captured from methane source (scf CH<sub>4</sub>/scf)

0.0423 = Density of methane (lb CH<sub>4</sub>/scf CH<sub>4</sub>)

0.000454 = tCH<sub>4</sub>/lb CH<sub>4</sub>

- (i) Project emissions from uncombusted methane ( $PE_{UM}$ ) must be quantified using Equation 5.47.
- (j) Offset Project Operators and Authorized Project Designees may choose to use default methane destruction efficiencies ( $DE_i$ ) provided in Appendix B or site-specific methane destruction efficiencies. Site-specific methane destruction efficiencies must be determined using an ARB approved methodology.

**Equation 5.47: Uncombusted Methane Emissions**

$$PE_{UM} = \sum_i MM_i \times (1 - DE_i) \times GWP_{CH4}$$

Where,

$PE_{UM}$  = Project emissions from uncombusted methane during the reporting period (tCO<sub>2</sub>e)

$i$	= Use of methane (flaring, power generation, heat generation, production of transportation fuel, injection into natural gas pipeline etc.) by all qualifying and non-qualifying devices
$MM_i$	= Methane measured sent to use $i$ during the reporting period (tCH <sub>4</sub> )
$DE_i$	= Efficiency of methane destruction device $i$ , either site-specific or from Appendix B (%)
$GWP_{CH_4}$	= Global warming potential of methane (tCO <sub>2</sub> e/tCH <sub>4</sub> )

With:

$$MM_i = \sum_i (PSW_{P,i} \times C_{CH_4} + PIB_{P,i} \times C_{CH_4} + PGW_{P,i} \times C_{CH_4} + NSW_{P,i} \times C_{CH_4}) \times 0.0423 \times 0.000454$$

Where,

$PSW_{P,i}$	= Volume of MG from pre-mining surface wells sent to qualifying and non-qualifying devices for destruction through use $i$ during the reporting period (scf)
$PIB_{P,i}$	= Volume of MG from pre-mining in-mine boreholes sent to by qualifying and non-qualifying devices for destruction through use $i$ during the reporting period (scf)
$PGW_{P,i}$	= Volume of MG from post-mining gob wells sent to qualifying and non-qualifying devices for destruction through use $i$ during the reporting period (scf)
$NSW_{P,i}$	= Volume of MG from newly drilled surface wells sent to qualifying and non-qualifying devices for destruction through use $i$ during the reporting period (scf)
$C_{CH_4}$	= Measured methane concentration of mine gas captured from methane source (scf CH <sub>4</sub> /scf)
0.0423	= Density of methane (lb CH <sub>4</sub> /scf CH <sub>4</sub> )
0.000454	= tCH <sub>4</sub> /lb CH <sub>4</sub>

- (k) If gas flow metering equipment does not internally correct for temperature and pressure, use Equation 5.48 to determine the amount of mine gas sent to each qualifying and non-qualifying device during the reporting period.

**Equation 5.48: MG Corrected for Temperature and Pressure**

$$MG_{corrected,i,y} = MG_{meas,i,y} \times \frac{520}{T_{MG,y}} \times \frac{P_{MG,y}}{1}$$

Where,

$MG_{corrected,i,y}$  = Corrected flow rate or total volume of MG collected for the time interval y at utilization type i, adjusted to 60°F and 1 atm (scf/unit of time)

$MG_{meas,i,y}$  = Measured flow rate or total volume of MG collected for the time interval y at utilization type i (scf/unit of time)

$T_{MG,y}$  = Measured temperature of the MG for the time interval y, °R=°F+460 (°R)

$P_{MG,y}$  = Measured pressure of the MG for the time interval y (atm)

## Chapter 6. Monitoring

### § 6.1. General Monitoring Requirements.

- (a) The Offset Project Operators or Authorized Project Designees is responsible for monitoring the performance of the offset project and operating each component of the collection and destruction system(s) in a manner consistent with the manufacturer's specifications.
- (b) Operational activity of the methane drainage and ventilation systems and the destruction devices must be monitored and documented at least hourly to ensure actual methane destruction. GHG reductions will not be accounted for during periods in which the destruction device is not operational.
  - (1) For flares, operation is defined as thermocouple readings above 500°F.
  - (2) For all other destruction devices, the Offset Project Operator or Authorized Project Designee must demonstrate the destruction device was operational, and this demonstration is subject to the review and verification of an ARB-approved third party offset project verification body.
- (c) If gas flow metering equipment does not internally correct for temperature and pressure, flow data must be corrected according to the appropriate quantification methodologies in Chapter 5.
- (d) If a project uses elevated amounts of atmospheric gases in extracted mine gas as evidence of a pre-mining well being mined through, nitrogen and oxygen concentrations must be determined for each well at the time of offset project commencement and when the Offset Project Operator or Authorized Project Designee reports a pre-mining well as eligible. Gas samples must be collected by a third-party technician and amounts of nitrogen and oxygen concentrations

determined by a full gas analysis using a chromatograph at an ISO 17025 accredited lab or a lab that has been certified by accreditation body conformant with ISO 17025 to perform test methods appropriate for atmospheric gas content analysis.

- (e) Data substitution is allowed for limited circumstances where a project encounters flow rate or methane concentration data gaps. Offset Project Operators or Authorized Project Designees may apply the data substitution methodology provided in Appendix C. No data substitution is permissible for data gaps resulting from inoperable destruction device monitoring equipment and no emission reductions will be credited under such circumstances.

### **§ 6.2. Instrument QA/QC.**

Instruments and equipment used to monitor the destruction of mine methane or the temperature and pressure used to correct data measurements to STP must be inspected, cleaned and calibrated according to the following:

- (a) All gas flow meters and methane analyzers must be:
  - (1) cleaned and inspected on a quarterly basis, with the activities performed and “as found/as left condition” of the equipment documented;
  - (2) field checked by a trained professional for calibration accuracy with the percent drift documented, using either a portable instrument (such as a pitot tube) or manufacturer specifications, within 24 hours of the end of a reporting period but no more than two months prior to the end date of the reporting period; and
  - (3) calibrated by the manufacturer or a certified calibration service per manufacturer’s specifications or every 5 years, whichever is more frequent.
- (b) Additionally, flow meter calibrations must be documented to show that the meter was calibrated and methane analyzer calibrations must be documented to show that the calibration was carried out to the range of conditions (temperature and pressure) corresponding to the range of conditions as measured at the mine.

- (c) If the field check on a piece of equipment reveals accuracy outside of a +/- 5% threshold, calibration by the manufacturer or a certified service provider is required for that piece of equipment.
- (d) For the interval between the last successful field check and any calibration event confirming accuracy below the +/- 5% threshold, all data from that meter or analyzer must be scaled according to the following procedure. These adjustments must be made for the entire period from the last successful field check until such time as the meter is properly calibrated.
  - (1) For calibrations that indicate the flow meter was outside the +/- 5% accuracy threshold, the project developer shall estimate total emission reductions using
    - (A) the metered values without correction; and
    - (B) the metered values adjusted based on the greatest calibration drift recorded at the time of calibration.
- (e) The lower of the two emission reduction estimates shall be reported as the scaled emission reduction estimate. Data monitored up to two months after a field check may be verified. As such, the end date of the reporting period must be no more than two months after the latest successful field check.
- (f) If a portable instrument is used (such as a handheld methane analyzer), the portable instrument must be calibrated according to manufacturer's specification prior to each use.
- (g) If a site-specific device destruction efficiency is used, device-specific testing must include three test runs, with the accepted final value being one standard deviation below the mean of the measured efficiencies.

### **§ 6.3. Document Retention.**

- (a) The Offset Project Operator or Authorized Project Designee is required to keep all documentation and information outlined in the Regulation and this protocol. Record retention requirements are set forth in the Regulation.
- (b) Information that must be retained by the Offset Project Operator or Authorized Project Designee must include, but is not limited to:

- (1) All data inputs for the calculation of the project baseline emissions and project emission reductions;
- (2) Emission reduction calculations;
- (3) Mine operating permits, leases (if applicable), and air, water and land use permits;
- (4) Notices of Violations (NOVs), and any administrative or legal consent orders related to project activities dating back at least three years prior to offset project commencement and for each year of project operation;
- (5) Copies of mine plans and mine ventilation plans submitted to MSHA throughout the project life;
- (6) Gas flow meter information (model number, serial number, manufacturer's calibration procedures);
- (7) Methane analyzer information (model number, serial number, calibration procedures);
- (8) Cleaning and inspection records for all gas meters;
- (9) Field check results for all gas meters and methane analyzers;
- (10) Calibration results for all gas meters and methane analyzers;
- (11) Corrective measures taken if meter does not meet performance specifications;
- (12) Gas flow data (for each flow meter);
- (13) Methane concentration monitoring data;
- (14) Gas temperature and pressure readings (only if flow meter does not correct for temperature and pressure automatically);
- (15) Destruction device information (model numbers, serial numbers, installation date, operation dates);
- (16) Destruction device monitoring data (for each destruction device);
- (17) All maintenance records relevant to the methane collection and/or destruction device(s) and monitoring equipment;
- (18) If using a calibrated portable gas analyzer for CH<sub>4</sub> content measurement the following records must be retained:
  - (A) Date, time, and location of methane measurement;

- (B) Methane content of biogas (% by volume) for each measurement;
- (C) Methane measurement instrument information (model number and serial number);
- (D) Date, time, and results of instrument calibration; and
- (E) Corrective measures taken if instrument does not meet performance specifications

**§ 6.4. Active Underground Mine Ventilation Air Methane Activities.**

- (a) The total inlet flow entering the destruction device must be measured continuously and recorded every two minutes to calculate average flow per hour.
- (b) The methane concentration of the ventilation air entering the destruction device and of the exhaust gas must be measured continuously and recorded every two minutes to calculate average methane concentration per hour.
- (c) If required in order to standardize the flow rate or volume of VAM, the temperature and pressure in the vicinity of the flow meter must be measured continuously and recorded at least every hour to calculate hourly pressure and temperature.
- (d) Offset Project Operators and Authorized Project Designees must monitor the parameters prescribed in Table 7.1.

**Table 6.1. Active Underground Mine VAM Activity Monitoring Parameters – Quantification Methodology**

Eq. #	Parameter	Description	Data Unit	Measurement Frequency	Calculated (c), Measured (m), Operating Records (o)	Comment
5.3 5.4	VAM <sub>B,i</sub>	Volume of VAM that would have been sent to a non-qualifying device for destruction through use i during the reporting period in the baseline scenario	scf	Estimated at offset project commencement; calculated annually if non-qualifying device continues to operate after project start	c, m	The greater of the two values calculated per section 5.1.1(d)
5.3 5.4 5.8	C <sub>CH4</sub>	Measured methane concentration of captured	scf CH <sub>4</sub> / scf	Continuously	m	Readings taken every two minutes to calculate



		ventilation air				average methane concentration per hour
5.4	VAM <sub>P,i</sub>	Volume of ventilation air sent to qualifying and non-qualifying devices for destruction through use i during the project during the reporting period	scf	Continuously	m	Adjusted if applicable using Equation 5.10
5.4 5.8	MG <sub>SUPP,i</sub>	Volume of mine methane extracted from a methane drainage system and sent to destruction device with	scf	Every reporting period	m	Adjusted if applicable using Equation 5.10
5.6	CONS <sub>ELEC</sub>	Additional electricity consumption for the capture and destruction of methane during the reporting period	MWh	Every reporting period	o	From electricity use records
5.6	CONS <sub>HEAT</sub>	Additional heat consumption for the capture and destruction of methane during the reporting period	Volume	Every reporting period	o	From purchased heat records
5.6	CONS <sub>FF</sub>	Additional fossil fuel consumption for the capture and destruction of methane during the reporting period	Volume	Every reporting period	o	From fuel use records
5.8	C <sub>CH4MG</sub>	Measured methane concentration of captured mine gas	scf CH <sub>4</sub> / scf	Continuously	m, c	Readings taken every two minutes to calculate average methane concentration per hour
5.8 5.9	VAM <sub>FLOW,y</sub>	Average flow rate of ventilation air entering the	scfm	Continuously	m, c	Readings taken every two minutes

		destruction device during period y corrected to standard conditions, if applicable, for inlet flow gas pressure and temperature				to calculate average hourly flow; adjusted if applicable using Equation 5.10
5.8 5.9	$TIME_y$	Time during which the destruction device is operational during period y	m	Continuously	m	
5.8 5.9	$C_{CH_4,exhaust}$	Measured methane concentration in the ventilation air exhaust	scf CH <sub>4</sub> / scf	Continuously	m, c	Readings taken every two minutes (either average over two minutes or instantaneous) to calculate average methane concentration per hour
5.10	$VAM_{FLOW,meas,y}$	Uncorrected average flow rate of ventilation air entering the destruction device as measured during period y	scf/unit of time	Continuously	m, c	Readings taken every two minutes to calculate average hourly flow; adjusted, if applicable, to $VAM_{FLOW,y}$ using Equation 5.10
5.10	$T_{VAMinflow,y}$	Measured temperature of ventilation air entering the destruction device for the time period y, °R=°F+460	°R	Continuously	m, c	Readings taken at least every hour to calculate hourly temperature
5.10	$P_{VAMinflow,y}$	Measured pressure of ventilation air entering the destruction device for the time period y	atm	Continuously	m, c	Readings taken at least every hour to calculate hourly pressure

### **§ 6.5. Active Underground Mine Methane Drainage Activities.**

- (a) Mine gas from each methane source (i.e., pre-mining surface wells, pre-mining in-mine boreholes, or post-mining gob wells) must be monitored separately prior to interconnection with other MG sources. The volumetric gas flow, methane concentration, temperature, and pressure must be monitored and recorded separately for each methane source.
- (b) Mine gas from each methane source (i.e., pre-mining surface wells, pre-mining in-mine boreholes, or post-mining gob wells) must be measured continuously. Offset Project Operators must record the mine gas flow rate every 15 minutes, adjusted for temperature and pressure, or record the totalized mine gas volume at least daily, adjusted for temperature and pressure.
- (c) Mine gas delivered to a destruction device must be measured continuously. Offset Project Operators must record the mine gas flow rate every 15 minutes, adjusted for temperature and pressure, or record the totalized mine gas volume at least daily, adjusted for temperature and pressure. The flow of gas to each destruction device must be monitored separately for each destruction device, unless:
  - (1) a project consists of destruction devices that are of identical efficiency and verified to be operational throughout the reporting period; then a single flow meter may be used to monitor gas flow to all destruction devices; or
  - (2) a project consists of destruction devices that are not of identical efficiency, in which case the destruction efficiency of the least efficient destruction device must be used as the destruction efficiency for all destruction devices monitored by that meter.
- (d) If a project using a single meter to monitor gas flow to multiple destruction devices has any periods of time when not all destruction devices downstream of a single flow meter are operational, methane destruction from the set of downstream devices during these periods of time will only be eligible provided that the offset verifier can confirm all of the following requirements and conditions are met:

- (1) The destruction efficiency of the least efficient downstream destruction device in operation must be used as the destruction efficiency for all destruction devices downstream of the single meter; and
  - (2) All devices are either equipped with valves on the input gas line that close automatically if the device becomes non-operational (requiring no manual intervention), or designed in such a manner that it is physically impossible for gas to pass through while the device is non-operational; and
  - (3) For any period of time during which one or more downstream destruction devices are not operational, it must be documented that the remaining operational devices have the capacity to destroy the maximum gas flow recorded during the period.
- (e) The methane concentration of the mine gas extracted from each methane source must be measured continuously, recorded every 15 minutes and averaged at least daily.
- (f) If required in order to adjust the flow rate or volume of mine gas, the temperature and pressure of the mine gas from each methane source must be measured continuously and recorded at least every hour to calculate hourly temperature and pressure.
- (g) Offset Project Operators and Authorized Project Designees must monitor the parameters prescribed in Table 6.2.

**Table 6.2. Active Underground Mine Methane Drainage Activity Monitoring Parameters – Quantification Methodology**

Eq. #	Parameter	Description	Data Unit	Measurement Frequency	Calculated (c), Measured (m), Operating Records (o), Reference (r)	Comment
-------	-----------	-------------	-----------	-----------------------	--	---------

5.13 5.14	PSW <sub>B,i</sub>	Volume of MG from pre-mining surface wells that would have been sent to non-qualifying devices for destruction through use i during the reporting period in the baseline scenario	scf	Estimated at offset project commencement; calculated annually if non-qualifying device continues to operate after project start	c, m	The greater of the two values calculated per section 5.2.1(e).
5.13 5.14	PIB <sub>B,i</sub>	Volume of MG from pre-mining in-mine boreholes that would have been sent to non-qualifying devices for destruction through use i during the reporting period in the baseline scenario	scf	Estimated at offset project commencement; calculated annually if non-qualifying device continues to operate after project start	c, m	The greater of the two values calculated per section 5.2.1(e)
5.13 5.14	PGW <sub>B,i</sub>	Volume of MG from post-mining gob wells that would have been sent to non-qualifying devices for destruction through use i during the reporting period in the baseline scenario	scf	Estimated at offset project commencement; calculated annually if non-qualifying device continues to operate after project start	c, m	The greater of the two values calculated per section 5.2.1(e)
5.13 5.14 5.19 5.20	C <sub>CH4</sub>	Measured methane concentration of mine gas captured from methane source	scf CH <sub>4</sub> / scf	Continuously	m, c	Readings taken every two minutes to calculate average methane concentration per hour. Readings and application in equations must be done independently for each methane source

5.14 5.19 5.20	$PIB_{P,i}$	Volume of MG from pre-mining in-mine boreholes sent to qualifying and non-qualifying devices for destruction through use $i$ during the reporting period	scf	Every reporting period	m	Adjusted, if applicable, to STP using Equation 5.21
5.14 5.19 5.20	$PGW_{P,i}$	Volume of MG from post-mining gob wells sent to qualifying and non-qualifying devices for destruction through use $i$ during the reporting period	scf	Every reporting period	m	Adjusted, if applicable, to STP using Equation 5.21
5.14	$PSW_{nqd,i}$	Volume of MG from pre-mining surface wells sent to non-qualifying devices for destruction through use $i$ during the reporting period	scf	Every reporting period	m	Adjusted, if applicable, to STP using Equation 5.21
5.15	$PSW_{e_{pre,i}}$	Volume of MG destroyed by qualifying destruction devices, from the offset project commencement date through the end of the current reporting period, captured from pre-mining surface wells that were mined through during the current reporting period	scf	Every reporting period	m	Adjusted, if applicable, to STP using Equation 5.21

5.15	PSWe <sub>post,i</sub>	Volume of MG destroyed by qualifying destruction devices in the current reporting period captured from pre-mining surface wells that were mined through during earlier reporting periods	scf	Every reporting period	m	Adjusted, if applicable, to STP using Equation 5.21
5.17	CONSELEC	Additional electricity consumption for the capture and destruction of methane during the reporting period	MWh	Every reporting period	o	From electricity use records
5.17	CONSHHEAT	Additional heat consumption for the capture and destruction of methane during the reporting period	Volume	Every reporting period	o	From purchased heat records
5.17	CONSEFF	Additional fossil fuel consumption for the capture and destruction of methane during the reporting period	Volume	Every reporting period	o	From fuel use records
5.19 5.20	PSWP <sub>P,all,i</sub>	Volume of MG from pre-mining surface wells captured and destroyed by qualifying and non-qualifying devices through use <i>i</i> during the reporting period. For qualifying devices, all MG, whether from a mined through well or not must be quantified	scf	Every reporting period	m	Adjusted, if applicable, to STP using Equation 5.21

5.19 5.20	DE <sub>i</sub>	Efficiency of methane destruction device i	%	Annually	r or m	Default methane destruction efficiencies provided in Appendix B or site-specific methane destruction efficiencies determined using an ARB methodology
5.19 5.20	MG <sub>SUPP,i</sub>	Volume of mine methane extracted from a methane drainage system and combusted with VAM	scf	Every reporting period	m	Adjusted if applicable using Equation 5.21
5.19 5.20	C <sub>CH4MG</sub>	Measured methane concentration of captured mine gas	scf CH <sub>4</sub> /scf	Continuously	m, c	Readings taken every two minutes to calculate average methane concentration per hour
5.21	MG <sub>meas,i,y</sub>	Measured volume of MG collected for the time interval y at utilization type i	(scf/unit of time)	Continuously	m	Adjusted, if applicable, to STP using Equation 5.21
5.21	T <sub>MG,y</sub>	Measured temperature of MG for the time interval y, °R=°F+460	°R	Continuously	m, c	Readings taken at least every hour to calculate temperature for time interval y
5.21	P <sub>MG,y</sub>	Measured pressure of MG for the time interval y	atm	Continuously	m, c	Readings taken at least every hour to calculate temperature for time interval y

### § 6.6. Active Surface Mine Methane Drainage Activities.

- (a) SMM from the drainage system must be measured continuously. Offset Project Operators must record the SMM flow rate every 15 minutes, adjusted for



temperature and pressure, or record the totalized SMM volume at least daily, adjusted for temperature and pressure.

- (b) SMM delivered to a destruction device must be measured continuously. Offset Project Operators must record the SMM flow rate every 15 minutes, adjusted for temperature and pressure, or record the totalized SMM volume at least daily, adjusted for temperature and pressure. The flow of gas to each destruction device must be monitored separately for each destruction device, unless:
- (1) a project consists of destruction devices that are of identical efficiency and verified to be operational throughout the reporting period; then a single flow meter may be used to monitor gas flow to all destruction devices; or
  - (2) a project consists of destruction devices that are not of identical efficiency, in which case the destruction efficiency of the least efficient destruction device must be used as the destruction efficiency for all destruction devices monitored by that meter.
- (c) If a project using a single meter to monitor gas flow to multiple destruction devices has any periods of time when not all destruction devices downstream of a single flow meter are operational, methane destruction from the set of downstream devices during these periods of time will only be eligible provided that the offset verifier can confirm all of the following requirements and conditions are met:
- (1) The destruction efficiency of the least efficient downstream destruction device in operation must be used as the destruction efficiency for all destruction devices downstream of the single meter; and
  - (2) All devices are either equipped with valves on the input gas line that close automatically if the device becomes non-operational (requiring no manual intervention), or designed in such a manner that it is physically impossible for gas to pass through while the device is non-operational; and
  - (3) For any period of time during which one or more downstream destruction devices are not operational, it must be documented that the remaining operational devices have the capacity to destroy the maximum gas flow recorded during the period.

- (d) The methane concentration of the SMM extracted from each methane source must be measured continuously, recorded every 15 minutes and averaged at least daily.
- (e) If required in order to adjust the flow rate or volume of mine gas, the temperature and pressure of the SMM must be measured continuously and recorded at least every hour to calculate hourly temperature and pressure.
- (f) Offset Project Operators and Authorized Project Designees must monitor the parameters prescribed in Table 6.3.

**Table 6.3. Active Surface Mine Methane Drainage Activity Monitoring Parameters – Quantification Methodology**

Eq. #	Parameter	Description	Data Unit	Measurement Frequency	Calculated (c), Measured (m), Operating Records (o), Reference (r)	Comment
5.24 5.25	PSW <sub>B,i</sub>	Volume of MG from pre-mining surface wells that would have been sent to non-qualifying devices for destruction through use i during the reporting period in the baseline scenario	scf	Estimated at offset project commencement; calculated annually if non-qualifying device continues to operate after project start	c, m	The greater of the two values calculated per section 5.3.1(e).
5.24 5.25	PIB <sub>B,i</sub>	Volume of MG from pre-mining in-mine boreholes that would have been sent to non-qualifying devices for destruction through use i during the reporting period in the baseline scenario	scf	Estimated at offset project commencement; calculated annually if non-qualifying device continues to operate after project start	c, m	The greater of the two values calculated per section 5.3.1(e)

5.24 5.25	ECW <sub>B,i</sub>	Volume of MG from existing coalbed methane wells that would otherwise be shut-in and abandoned as a result of encroaching mining that would have been sent to non-qualifying devices for destruction through use i during the reporting period in the baseline scenario	scf	Estimated at offset project commencement; calculated annually if non-qualifying device continues to operate after project start	c, m	The greater of the two values calculated per section 5.3.1(e).
5.24 5.25	AWR <sub>B,i</sub>	Volume of MG from abandoned wells that are reactivated that would have been sent to non-qualifying devices for destruction through use i during the reporting period in the baseline scenario	scf	Estimated at offset project commencement; calculated annually if non-qualifying device continues to operate after project start	c, m	The greater of the two values calculated per section 5.3.1(e)
5.24 5.25	CDW <sub>B,i</sub>	Volume of MG from converted dewatering wells that would have been sent to non-qualifying devices for destruction through use i during the reporting period in the baseline scenario	scf	Estimated at offset project commencement; calculated annually if non-qualifying device continues to operate after project start	c, m	The greater of the two values calculated per section 5.3.1(e)

5.24 5.25 5.33 5.34	$C_{CH_4}$	Measured methane concentration of mine gas captured from methane source	scf CH <sub>4</sub> / scf	Continuously	m, c	Readings taken every two minutes to calculate average methane concentration per hour. Readings and application in equations must be done independently for each methane source
5.25	$PSW_{P,i}$	Volume of MG from pre-mining surface wells sent to qualifying and non-qualifying devices for destruction through use <i>i</i> during the reporting period. For qualifying devices, only the eligible amount per Equation 5.26 in accordance with sections 5.3.1(k), (l), and (m) must be quantified	scf	Every reporting period	m	Adjusted, if applicable, to STP using Equation 5.35
5.25 6.31	$PIB_{P,i}$	Volume of MG from pre-mining in-mine boreholes sent to qualifying and non-qualifying devices for destruction through use <i>i</i> during the reporting period	scf	Every reporting period	m	Adjusted, if applicable, to STP using Equation 5.35

5.25	ECW <sub>P,i</sub>	Volume of MG from existing coal bed methane wells that would otherwise be shut-in and abandoned as a result of encroaching mining sent to qualifying and non-qualifying devices for destruction through use <i>i</i> during the reporting period. For qualifying devices, only the eligible amount per Equation 5.27 in accordance with sections 5.3.1(k), (l), and (m) must be quantified	scf	Every reporting period	m	Adjusted, if applicable, to STP using Equation 5.35
5.25	AWR <sub>P,i</sub>	Volume of MG from abandoned wells that are reactivated sent to qualifying and non-qualifying devices for destruction through use <i>i</i> during the reporting period. For qualifying devices, only the eligible amount per Equation 5.28 in accordance with sections 5.3.1(k), (l), and (m) must be quantified	scf	Every reporting period	m	Adjusted, if applicable, to STP using Equation 5.35

5.25	CDW <sub>P,i</sub>	Volume of MG from converted dewatering wells sent to qualifying and non-qualifying devices for destruction through use i during the reporting period. For qualifying devices, only the eligible amount per Equation 5.29 in accordance with sections 5.3.1(k), (l), and (m) must be quantified	scf	Every reporting period	m	Adjusted, if applicable, to STP using Equation 5.35
5.25	PSW <sub>nqd,i</sub>	Volume of MG from pre-mining surface wells sent to non-qualifying devices for destruction through use i during the reporting period	scf	Every reporting period	m	Adjusted, if applicable, to STP using Equation 5.35
5.25	ECW <sub>nqd,i</sub>	Volume of MG from existing coal bed methane wells that would otherwise be shut-in and abandoned as a result of encroaching mining sent to non-qualifying devices for destruction through use i during the reporting period	scf	Every reporting period	m	Adjusted, if applicable, to STP using Equation 5.35

5.25	$AWR_{nqd,i}$	Volume of MG from abandoned wells that are reactivated sent to non-qualifying devices for destruction through use $i$ during the reporting period	scf	Every reporting period	m	Adjusted, if applicable, to STP using Equation 5.35
5.25	$CDW_{nqd,i}$	Volume of MG from converted dewatering wells sent to non-qualifying devices for destruction through use $i$ during the reporting period	scf	Every reporting period	m	Adjusted, if applicable, to STP using Equation 5.35
5.26	$PSW_{e_{pre,i}}$	Volume of MG sent to qualifying destruction devices, from the offset project commencement date through the end of the current reporting period, captured from pre-mining surface wells that were mined through during the current reporting period	scf	Every reporting period	m	Adjusted, if applicable, to STP using Equation 5.35
5.26	$PSW_{e_{post,i}}$	Volume of MG sent to qualifying destruction devices in the current reporting period captured from pre-mining surface wells that were mined through during earlier reporting periods	scf	Every reporting period	m	Adjusted, if applicable, to STP using Equation 5.35

5.27	ECWe <sub>pre,i</sub>	Volume of MG sent to qualifying destruction devices, from the offset project commencement date through the end of the current reporting period, captured from existing coal bed methane wells that would otherwise be shut-in and abandoned as a result of encroaching mining that were mined through during the current reporting period	scf	Every reporting period	m	Adjusted, if applicable, to STP using Equation 5.35
5.27	ECWe <sub>post,i</sub>	Volume of MG sent to qualifying destruction devices in the current reporting period captured from existing coal bed methane wells that would otherwise be shut-in and abandoned as a result of encroaching mining that were mined through during earlier reporting periods	scf	Every reporting period	m	Adjusted, if applicable, to STP using Equation 5.35



5.28	$AWRe_{pre,i}$	Volume of MG sent to qualifying destruction devices, from the offset project commencement date through the end of the current reporting period, captured from abandoned wells that are reactivated that were mined through during the current reporting period	scf	Every reporting period	m	Adjusted, if applicable, to STP using Equation 5.35
5.28	$AWRe_{post,i}$	Volume of MG sent to qualifying destruction devices in the current reporting period captured from abandoned wells that are reactivated that were mined through during earlier reporting periods	scf	Every reporting period	m	Adjusted, if applicable, to STP using Equation 5.35
5.29	$CDWe_{pre,i}$	Volume of MG sent to qualifying destruction devices, from the offset project commencement date through the end of the current reporting period, captured from converted dewatering wells that were mined through during the current reporting period	scf	Every reporting period	m	Adjusted, if applicable, to STP using Equation 5.35

5.29	$CDW_{e_{post,i}}$	Volume of MG sent to qualifying destruction devices in the current reporting period captured from converted dewatering wells that were mined through during earlier reporting periods	scf	Every reporting period	m	Adjusted, if applicable, to STP using Equation 5.35
5.31	$CONS_{ELEC}$	Additional electricity consumption for the capture and destruction of methane during the reporting period	MWh	Every reporting period	o	From electricity use records
5.31	$CONS_{HEAT}$	Additional heat consumption for the capture and destruction of methane during the reporting period	Volume	Every reporting period	o	From purchased heat records
5.31	$CONS_{FF}$	Additional fossil fuel consumption for the capture and destruction of methane during the reporting period	Volume	Every reporting period	o	From fuel use records
5.33 5.34	$PSW_{P,all,i}$	Volume of MG from pre-mining surface wells sent to qualifying and non-qualifying devices for destruction through use $i$ during the reporting period. For qualifying devices, all MG, whether from a mined through well or not, must be quantified	scf	Every reporting period	m	Adjusted, if applicable, to STP using Equation 5.35

5.33 5.34	ECW <sub>P,all,i</sub>	Volume of MG from existing coal bed methane wells that would otherwise be shut-in and abandoned as a result of encroaching mining sent to qualifying and non-qualifying devices for destruction through use <i>i</i> during the reporting period. For qualifying devices, all MG, whether from a mined through well or not, must be quantified	scf	Every reporting period	m	Adjusted, if applicable, to STP using Equation 5.35
5.33 5.34	AWR <sub>P,all,i</sub>	Volume of MG from abandoned wells that are reactivated sent to qualifying and non-qualifying devices for destruction through use <i>i</i> during the reporting period. For qualifying devices, all MG, whether from a mined through well or not, must be quantified	scf	Every reporting period	m	Adjusted, if applicable, to STP using Equation 5.35

5.33 5.34	$CDW_{P,all,i}$	Volume of MG from converted dewatering wells sent to qualifying and non-qualifying devices for destruction through use $i$ during the reporting period. For qualifying devices, all MG, whether from a mined through well or not, must be quantified	scf	Every reporting period	m	Adjusted, if applicable, to STP using Equation 5.35
5.33 5.34	$DE_i$	Efficiency of methane destruction device $i$	%	Annually	r or m	Default methane destruction efficiencies provided in Appendix B or site-specific methane destruction efficiencies determined using an ARB approved methodology
5.35	$MG_{meas,i,y}$	Measured volume of MG collected for the time interval $y$ at utilization type $i$	(scf/unit of time)	Continuously	m	Adjusted, if applicable, to STP using Equation 5.35
5.35	$T_{MG,y}$	Measured temperature of MG for the time interval $y$ , $^{\circ}R = ^{\circ}F + 460$	$^{\circ}R$	Continuously	m, c	Readings taken at least every hour to calculate temperature for time interval $y$
5.35	$P_{MG,y}$	Measured pressure of MG for the time interval $y$	atm	Continuously	m, c	Readings taken at least every hour to calculate temperature for time interval $y$

### **§ 6.7. Abandoned Underground Mine Methane Recovery Activities.**

- (a) AMM from the drainage system must be measured continuously. Offset Project Operators must record the AMM flow rate every 15 minutes, adjusted for temperature and pressure, or record the totalized mine gas volume at least daily, adjusted for temperature and pressure.
- (b) AMM delivered to a destruction device must be measured continuously. Offset Project Operators must record the AMM flow rate every 15 minutes, adjusted for temperature and pressure or record the totalized mine gas volume at least daily, adjusted for temperature and pressure. The flow of gas to each destruction device must be monitored separately for each destruction device, unless:
  - (1) a project consists of destruction devices that are of identical efficiency and verified to be operational throughout the reporting period; then a single flow meter may be used to monitor gas flow to all destruction devices; or
  - (2) a project consists of destruction devices that are not of identical efficiency, in which case the destruction efficiency of the least efficient destruction device must be used as the destruction efficiency for all destruction devices monitored by that meter.
- (c) If a project using a single meter to monitor gas flow to multiple destruction devices has any periods of time when not all destruction devices downstream of a single flow meter are operational, methane destruction from the set of downstream devices during these periods of time will only be eligible provided that the offset verifier can confirm all of the following requirements and conditions are met:
  - (1) The destruction efficiency of the least efficient downstream destruction device in operation must be used as the destruction efficiency for all destruction devices downstream of the single meter; and
  - (2) All devices are either equipped with valves on the input gas line that close automatically if the device becomes non-operational (requiring no manual intervention), or designed in such a manner that it is physically impossible for gas to pass through while the device is non-operational; and

- (3) For any period of time during which one or more downstream destruction devices are not operational, it must be documented that the remaining operational devices have the capacity to destroy the maximum gas flow recorded during the period.
- (d) The methane concentration of the MG extracted from each methane source must be measured continuously, recorded every 15 minutes and averaged at least daily.
- (e) If required in order to adjust the flow rate or volume of AMM, the temperature and pressure of the AMM must be measured continuously and recorded at least every hour to calculate hourly temperature and pressure.
- (f) Offset Project Operators or Authorized Project Designees that elect to derive mine-specific hyperbolic emission rate decline curve coefficients using measured data from pre-existing wells or boreholes open to the atmosphere must adhere to the following:
  - (1) Offset Project Operators and Authorized Project Designees must monitor the:
    - (A) MG flow rates;
    - (B) local barometric pressure; and
    - (C) methane concentration of MG
  - (2) Data must be monitored over a 72 hour period on at least three separate occasions each separated by a minimum of 90 days.
  - (3) MG flow rate and the barometric pressure must be monitored continuously and recorded at least on an hourly basis.
  - (4) Methane concentration must be measured at least daily.
- (g) Offset Project Operators and Authorized Project Designees must monitor the parameters prescribed in Table 6.4.

**Table 6.4. Abandoned Underground Mine Methane Recovery Activity Monitoring Parameters – Quantification Methodology**

Eq. #	Parameter	Description	Data Unit	Measurement Frequency	Calculated (c), Measured (m), Operating Records (o), Reference (r)	Comment

5.39	PSW <sub>B,i</sub>	Volume of MG from pre-mining surface wells sent to non-qualifying devices for destruction through use i during the reporting period	scf	Estimated at offset project commencement; calculated annually if non-qualifying device continues to operate after project start	c, m	The greater of the two values calculated per section 5.4.1(f).
5.39	PIB <sub>B,i</sub>	Volume of MG from pre-mining in-mine boreholes sent to non-qualifying devices for destruction through use i during the reporting period	scf	Estimated at offset project commencement; calculated annually if non-qualifying device continues to operate after project start	c, m	The greater of the two values calculated per section 5.4.1(f).
5.39	PGW <sub>B,i</sub>	Volume of MG from post-mining gob wells sent to non-qualifying devices for destruction through use i during the reporting period	scf	Estimated at offset project commencement; calculated annually if non-qualifying device continues to operate after project start	c, m	The greater of the two values calculated per section 5.4.1(f).
5.39	NSW <sub>B,i</sub>	Volume of MG from newly drilled surface wells sent to non-qualifying devices for destruction through use i during the reporting period	scf	Estimated at offset project commencement; calculated annually if non-qualifying device continues to operate after project start	c, m	The greater of the two values calculated per section 5.4.1(f).
5.39 5.46 5.47	C <sub>CH4</sub>	Measured methane concentration of mine gas captured from methane source	scf CH <sub>4</sub> / scf	Continuously	m, c	Readings taken every two minutes to calculate average methane concentration per hour. Readings and application in equations must be done independently for each methane source.

						When used to derive mine-specific hyperbolic emission rate decline curve coefficients, must be measured at least daily during the monitoring period.
5.41	$ER_{AMM,t_0}$	Emission rate of AMM at the time of mine closure	scf/d	At offset project commencement	o	Available from public agency (i.e., MSHA, EPA, etc.)
5.41	t	Time elapsed from the date of mine closure to midpoint of the reporting period	days	At offset project commencement	o	Available from public agency (i.e., MSHA, EPA, etc.)
5.42	$ER_{meas,y}$	Measured emission rate of MG venting from pre-existing wells or boreholes open to the atmosphere during time interval y	(scf/unit of time)	Continuously	m	Adjusted, if applicable, to STP using Equation 5.39
5.42 5.48	$T_{MG,y}$	Measured temperature of MG for the time interval y, °R=°F+460	°R	Continuously	m, c	Readings taken at least every hour to calculate temperature for time interval y
5.42 5.48	$P_{MG,y}$	Measured pressure of MG for the time interval y	atm	Continuously	m, c	Readings taken at least every hour to calculate temperature for time interval y
5.44	$CONS_{ELEC}$	Additional electricity consumption for the capture and destruction of methane during the reporting period	MWh	Every reporting period	o	From electricity use records
5.44	$CONS_{HEAT}$	Additional heat	Volume	Every reporting	o	From



		consumption for the capture and destruction of methane during the reporting period		period		purchased heat records
5.44	$CONS_{FF}$	Additional fossil fuel consumption for the capture and destruction of methane during the reporting period	Volume	Every reporting period	o	From fuel use records
5.46 5.47	$PSW_{P,i}$	Volume of MG from pre-mining surface wells sent to qualifying and non-qualifying devices for destruction through use $i$ during the reporting period	scf	Every reporting period	m	Adjusted, if applicable, to STP using Equation 5.43
5.46 5.47	$PIB_{P,i}$	Volume of MG from pre-mining in-mine boreholes sent to by qualifying and non-qualifying devices for destruction through use $i$ during the reporting period	scf	Every reporting period	m	Adjusted, if applicable, to STP using Equation 5.43
5.46 5.47	$PGW_{P,i}$	Volume of MG from post-mining gob wells sent to qualifying and non-qualifying devices for destruction through use $i$ during the reporting period	scf	Every reporting period	m	Adjusted, if applicable, to STP using Equation 5.43
5.46 5.47	$NSW_{P,i}$	Volume of MG from newly drilled surface wells sent to qualifying and non-qualifying devices for destruction through use $i$ during the reporting period	scf	Every reporting period	m	Adjusted, if applicable, to STP using Equation 5.43

5.46 5.47	DE <sub>i</sub>	Efficiency of methane destruction device i	%	Annually	r or m	Default methane destruction efficiencies provided in Appendix B or site-specific methane destruction efficiencies determined using an ARB approved methodology
5.48	MG <sub>meas,i,y</sub>	Measured volume of MG collected for the time interval y at utilization type i	(scf/unit of time)	Continuously	m	Adjusted, if applicable, to STP using Equation 5.32
<b>Monitoring Parameters for Deriving Mine-Specific Hyperbolic Emission Rate Decline Curve Coefficients</b>						
Description			Data Unit	Measurement Frequency	Calculated (c), Measured (m)	Comment
MG flow rate			(mscf/d)	Continuously	m, c	Recordings taken at least on an hourly basis during the monitoring period
Local barometric pressure			atm	Continuously	m	Recordings taken at least on an hourly basis during the monitoring period
Measured methane concentration of mine gas captured from methane source			scf CH <sub>4</sub> /scf	Continuously	m	Readings taken at least daily during the monitoring period.

## Chapter 7. Reporting

In addition to the offset project requirements set forth in the Regulation, mine methane capture offset projects must adhere to the project listing and reporting eligibility requirements below.

### § 7.1. Listing Requirements.

- (a) Listing information must be submitted by the Offset Project Operator or Authorized Project Designee no later than the date on which the Offset Project Operator or Authorized Project Designee submits the first Offset Project Data Report.
- (b) In order for a mine methane capture compliance offset project to be listed, the Offset Project Operator or Authorized Project Designee must submit the information required by the Regulation, in addition to the following information:
  - (1) Offset project name.
  - (2) Mine methane capture activity type (i.e., active underground mine VAM activity, active underground mine methane drainage activity, active surface mine methane drainage activity, or abandoned underground mine methane recovery activity).
  - (3) Contact information including name, phone number, mailing address, physical address (if different from mailing address), and email address for the:
    - (A) Offset Project Operator; and
    - (B) Authorized Project Designee (if applicable).
  - (4) CITSS ID number for the:
    - (A) Offset Project Operator; and
    - (B) Authorized Project Designee (if applicable).
  - (5) Contact information including name, phone number, email address and, if applicable, the organizational affiliation for:
    - (A) the person submitting the information;
    - (B) technical consultants.
  - (6) Date of form completion.
  - (7) \*Name and mailing address of mine owner(s) and parent company(ies), if different from owner.
  - (8) \*Name and mailing address of surface owner(s), if different from mine owner.

- (9) \*Name and mailing address of mineral owner(s), if different from mine owner.
- (10) \*Name and mailing address of mine operator(s), if different from mine owner.
- (11) \*Name and mailing address of methane destruction system owner(s), if different from mine owner.
- (12) Other parties with a material interest.
- (13) A description of the mine and resource ownership and operation structures.
- (14) \*Documentation (e.g., title report, coal lease, gas lease, etc.) showing the Offset Project Operator's legal authority to implement the offset project.
- (15) \*Physical address and latitude and longitude coordinates of mine site.
- (16) \*Indicate if the project occurs on private or public lands and further specify if the project occurs on any of the following categories of land:
  - (A) Land that is owned by, or subject to an ownership or possessory interest of a Tribe;
  - (B) Land that is "Indian lands" of a Tribe, as defined by 25 U.S.C. §81(a)(1); or
  - (C) Land that is owned by any person, entity, or Tribe, within the external borders of such Indian lands.
- (17) \*If the project is located on one the above categories of land, a description and copies of documentation demonstrating that the land is owned by (or subject to an ownership or possessory interest of) a tribe or private entities.
- (18) \*MSHA mine identification number.
- (19) \*MSHA classifications.
  - (A) coal or metal and nonmetal;
  - (B) underground or surface; and
  - (C) active or abandoned.
- (20) Mine basin as defined by the American Association of Petroleum Geologists (AAPG) Geologic Note: AAPG-CSD Geological Provinces

Code Map: AAPG Bulletin, Prepared by Richard F. Meyer, Laurie G. Wallace, and Fred J. Wagner, Jr., Volume 75, Number 10 (October 1991).

- (21) \*Mining method(s) employed (e.g., longwall, room and pillar, open-pit, etc.).
- (22) \*Average annual mineral production (specify mineral produced and unit).
- (23) \*Year of initial production.
- (24) \*Year of closure (estimate if mine is not yet closed).
- (25) Name of state and/or federal agency(ies) responsible for issuing mine leases and/or permits.
- (26) List any permits obtained, or to be obtained, to build and operate the project.
- (27) For active underground mine VAM activities, active underground mine methane drainage activities, and active surface mine methane drainage activities, up-to-date mine plan, mine ventilation plan, and mine map submitted to MSHA and/or appropriate state or federal agency responsible for mine leasing/permitting.
- (28) \*For abandoned mine methane recovery activities, the final mine maps submitted to appropriate state or federal environmental or mining agencies upon closure.
- (29) Offset project commencement date and specification of the action(s) that identify the commencement date.
- (30) First reporting period.
- (31) A qualitative characterization and quantitative estimate of the baseline emissions at the mine including an explanation of how the quantitative estimate was reached.
- (32) Describe any mine methane destruction occurring at the mine prior to the offset project commencement date. List the source of the methane destroyed, destruction device(s) used, and device operation dates.
- (33) A description of the project activities that will lead to GHG emission reductions including the methane end-use management option(s),

destruction devices, and metering and data collection systems to be employed by the project.

- (34) For active underground mine VAM activities, state whether supplemental methane will be used.
- (35) Declaration that the project is not being implemented as a result of any federal, state or local law, statute, regulation, court order or other legally binding mandate.
- (36) \*Disclose if any GHG reductions associated with the offset project have ever been registered with or claimed by another registry or program, or sold to a third party prior to our listing. Identify the registry or program as well as the vintage(s) of credits issued, reporting period(s), and verification bodies that have performed verification services.
- (37) State whether the project is transitioning to the Compliance Offset Protocol Mine Methane Capture Projects, after previously being listed as an early action offset project.
- (38) \*List any programs participated in by the mine owner and operator, either in the past or present, that encourage the capture and destruction of mine methane. If applicable, include programs at mine locations other than the project site. Specify dates of participation for each program
- (39) \*Bird's-eye view map of the mine site that includes:
  - (A) Longitude and latitude coordinates.
  - (B) Governing jurisdictions.
  - (C) Public and private roads.
  - (D) Mine permit boundary.
  - (E) Mine lease boundary, if applicable.
  - (F) Location of existing ventilation shafts. For active underground mine VAM activities, indicate whether or not the shaft is part of the project.
  - (G) Planned location of additional ventilation shafts. For active underground mine VAM activities, indicate whether or not the shaft will be part of the project.

- (H) Location of existing wells and boreholes. For active underground mine methane drainage activities, active surface mine methane drainage activities, and abandoned underground mine methane recovery activities, assign a number to each existing well/borehole and, on a separate sheet of paper, indicate:
1. the source type (i.e., pre-mining surface well, pre-mining in-mine borehole, post-mining gob well, existing coal bed methane (CBM) well that would otherwise be shut-in and abandoned, abandoned well that is re-activated, and converted dewatering wells);
  2. whether or not the well/borehole is part of the project; and
  3. for pre-mining surface wells, specify whether or not the well is mined through and when the well was, or is expected to be, mined through.
- (I) Location of additional wells and boreholes planned to be drilled prior to offset project commencement. For active underground mine methane drainage activities, active surface mine methane drainage activities, and abandoned underground mine methane recovery activities, assign a number to each well/borehole and, on a separate sheet of paper, indicate:
1. the source type (i.e., pre-mining surface well, pre-mining in-mine borehole, post-mining gob well);
  2. whether or not the well/borehole will be part of the project; and
  3. for pre-mining surface wells, specify when the well is expected to be mined through.
- (J) Location of existing equipment used to collect, process and/or enrich, store, meter, and destroy mine methane. Assign a number to each piece of equipment and, on a separate sheet of paper, indicate:
1. the manufacturer and name of each piece of equipment;

2. the purpose of each piece of equipment;
3. the installation date of each piece of equipment;
4. for metering equipment, the date of the most recent inspection, cleaning and calibration of each piece of equipment;
5. for destruction devices, whether it is a qualifying or non-qualifying destruction device in accordance with Chapter 2;
6. for non-qualifying destruction devices that were operating at the mine prior to offset project commencement and during the year immediately preceding offset project commencement, provide the volume of VAM/MM/SMM/AMM destroyed by the device in the three-year period prior to offset project commencement (or during the length of time the devices are operational, if less than three years), averaged according to the length of the reporting period; and
7. for destruction devices that have been source-tested to develop site-specific device destruction efficiency, the date of the test and the resulting destruction efficiency.

(K) Location of additional equipment used to collect, process and/or enrich, store, meter, and destroy mine methane planned to be installed prior to offset project commencement. Assign a number to each piece of equipment and, on a separate sheet of paper, indicate:

1. the manufacturer, name/model number, and serial number of each piece of equipment;
2. the purpose of each piece of equipment;
3. the expected installation date of each piece of equipment; and
4. for destruction devices, whether it is a qualifying or non-qualifying destruction device in accordance with Chapter 2.



- (40) A geologic cross section diagram showing aboveground and underground conditions including:
  - (A) Mined and unmined coal seam(s) from the surface to 50 meters below the lowest mined seam.
  - (B) Underground mine extents according to an up-to-date mine plan.
  - (C) Include the well depth of completion relative to the lowermost mined seam.
  - (D) Mining progress indicating direction of mining.
  - (E) Aboveground mine boundary.
  - (F) For active underground mine VAM activities, all existing and planned ventilation shafts (labeled using the same numbering system as the map).
  - (G) For active underground mine methane drainage activities, active surface mine methane drainage activities and abandoned underground mine methane recovery activities, all existing and planned wells/boreholes (labeled using the same numbering system as the map). Include the depth and angle of existing pre-mining surface wells.
  - (H) Existing and planned equipment used to collect, process and/or enrich, store, meter, and destroy mine methane (labeled using the same numbering system as the map).
- (c) Abandoned mine methane recovery activities that are comprised of multiple mines as allowed for by section 2.4 must provide the items marked with an asterisk (\*) for each involved mine.

**§ 7.2. Offset Project Data Report.**

- (a) Offset Project Operators or Authorized Project Designees must submit an Offset Project Data Report (OPDR) at the conclusion of each Reporting Period according to the reporting schedule in the Regulation.
- (b) Offset Project Operators or Authorized Project Designees must submit the information required by the Regulation, in addition to the following information:
  - (1) Offset project name.

- (2) Mine methane capture activity type (i.e., active underground mine VAM activity, active underground mine methane drainage activity, active surface mine methane drainage activity, or abandoned underground mine methane recovery activity).
- (3) Contact information including name, phone number, mailing address, physical address (if different from mailing address), and email address for the:
  - (A) Offset Project Operator; and
  - (B) Authorized Project Designee (if applicable).
- (4) CITSS ID number for the:
  - (A) Offset Project Operator; and
  - (B) Authorized Project Designee (if applicable).
- (5) Contact information including name, phone number, email address and, if applicable, the organizational affiliation for:
  - (A) the person submitting the information;
  - (B) technical consultants.
- (6) Date of form completion.
- (7) Reporting period.
- (8) Offset project commencement date.
- (9) \*Physical address and latitude and longitude coordinates of mine site.
- (10) Mine basin as defined by the American Association of Petroleum Geologists (AAPG) Geologic Note: AAPG-CSD Geological Provinces Code Map: AAPG Bulletin, Prepared by Richard F. Meyer, Laurie G. Wallace, and Fred J. Wagner, Jr., Volume 75, Number 10 (October 1991).
- (11) \*Mining method(s) employed (e.g., longwall, room and pillar, open-pit, etc.).
- (12) \*Mineral production during reporting period (specify mineral produced and unit).
- (13) Statement as to whether all the information submitted for project listing is still accurate. If not, provide updates to relevant listing information.

- (14) \*Statement as to whether the project has met all local, state, or federal regulatory requirements during the reporting period. If not, an explanation of the non-compliance must be provided.
- (15) For active underground mine methane drainage activities and active surface mine methane drainage activities, latest mine plan and mine map submitted to appropriate state or federal agency responsible for mine leasing/permitting.
- (16) For active underground mine VAM activities, state whether supplemental methane was used.
- (17) Baseline emissions during the reporting period (BE), following the requirements of Chapter 5.
- (18) Project emissions during the reporting period (PE), following the requirements of Chapter 5.
- (19) A calculation of the total net GHG reductions for the reporting period (ER), following the requirements of Chapter 5.
- (20) For each methane source:
  - (A) name the destruction device that captured methane was sent to;
  - (B) provide the amount of VAM or mine gas (MG) collected during the reporting period and the methane concentration of the VAM/MG;
  - (C) provide the amount of methane (CH<sub>4</sub>) sent to each qualifying destruction device during the reporting period;
  - (D) provide the amount of methane (CH<sub>4</sub>) sent to each non-qualifying destruction device during the reporting period; and
  - (E) for pre-mining surface wells, indicate whether the well is mined through.
- (21) For active underground mine methane drainage activities and active surface mine methane drainage activities, identify all pre-mining surface wells that were mined through during the reporting period in accordance with Chapter 5.
- (22) For each qualifying and non-qualifying destruction device:

- (A) provide the amount of methane destroyed during the reporting period; and
  - (B) indicate if the gas flow metering equipment for the device internally corrects for temperature and pressure
- (23) Indicate whether the project used site-specific methane destruction efficiencies and, if so, provide a description of the process of establishing these destruction efficiencies that includes the identity of any third parties involved.
- (24) Declaration that the project is not being implemented as a result of any federal, state or local law, statute, regulation, court order or other legally binding mandate.
- (d) Abandoned mine methane recovery activities that are comprised of multiple mines as allowed for by section 2.4 must provide the items marked with an asterisk (\*) for each involved mine.

#### **Chapter 8. Verification**

- (a) All Offset Project Data Reports are subject to regulatory verification as set forth in the Regulation by an ARB accredited offset verification body.
- (b) The Offset Project Data Reports must receive a positive or qualified positive verification statement to be issued ARB or registry offset credits.

## Appendix A. Emission Factors – Quantification Methodology

**Table A.1 CO<sub>2</sub> Emission Factors for Fossil Fuel Use**

Fuel Type	Default High Heat Value	Default CO <sub>2</sub> Emission Factor	
<b>Coal and Coke</b>	<b>mmBtu / short ton</b>	<b>kg CO<sub>2</sub> / mmBtu</b>	<b>kg CO<sub>2</sub> / short ton</b>
Anthracite	25.09	103.54	2597.819
Bituminous	24.93	93.40	2328.462
Subbituminous	17.25	97.02	1673.595
Lignite	14.21	96.36	1369.276
Coke	24.80	102.04	2530.592
Mixed (Commercial sector)	21.39	95.26	2037.611
Mixed (Industrial coking)	26.28	93.65	2461.122
Mixed (Electric Power sector)	19.73	94.38	1862.117
<b>Natural Gas</b>	<b>mmBtu / scf</b>	<b>kg CO<sub>2</sub> / mmBtu</b>	<b>kg CO<sub>2</sub> / scf</b>
(Weighted U.S. Average)	1.028 x 10 <sup>-3</sup>	53.02	0.055
<b>Petroleum Products</b>	<b>mmBtu/gallon</b>	<b>kg CO<sub>2</sub> / mmBtu</b>	<b>kg CO<sub>2</sub> / gallon</b>
Distillate Fuel Oil No. 1	0.139	73.25	10.182
Distillate Fuel Oil No. 2	0.138	73.96	10.206
Distillate Fuel Oil No. 4	0.146	75.04	10.956
Distillate Fuel Oil No. 5	0.140	72.93	10.210
Residual Fuel Oil No. 6	0.150	75.10	11.265
Used Oil	0.135	74.00	9.990
Kerosene	0.135	75.20	10.152
Liquefied petroleum gases (LPG)	0.092	62.98	5.794
Propane	0.091	61.46	5.593
Propylene	0.091	65.95	6.001
Ethane	0.069	62.64	4.322
Ethanol	0.084	68.44	5.749
Ethylene	0.100	67.43	6.743
Isobutane	0.097	64.91	6.296
Isobutylene	0.103	67.74	6.977

Butane	0.101	65.15	6.580
Butylene	0.103	67.73	6.976
Naphtha (<401 deg F)	0.125	68.02	8.503
Natural Gasoline	0.110	66.83	7.351
Other Oil (>401 deg F)	0.139	76.22	10.595
Pentanes Plus	0.110	70.02	7.702
Petrochemical Feedstocks	0.129	70.97	9.155
Petroleum Coke	0.143	102.41	14.645
Special Naphtha	0.125	72.34	9.043
Unfinished Oils	0.139	74.49	10.354
Heavy Gas Oils	0.148	74.92	11.088
Lubricants	0.144	74.27	10.695
Motor Gasoline	0.125	70.22	8.778
Aviation Gasoline	0.120	69.25	8.310
Kerosene-Type Jet Fuel	0.135	72.22	9.750
Asphalt and Road Oil	0.158	75.36	11.907
Crude Oil	0.138	74.49	10.280
<b>Other fuels (solid)</b>	<b>mmBtu / short ton</b>	<b>kg CO<sub>2</sub> / mmBtu</b>	<b>kg CO<sub>2</sub> / short ton</b>
Municipal Solid Waste	9.95 <sup>1</sup>	90.7	902.465
Tires	26.87	85.97	2310.014
Plastics	38.00	75.00	2850.000
Petroleum Coke	30.00	102.41	3072.300
<b>Other fuels (Gaseous)</b>	<b>mmBtu / scf</b>	<b>kg CO<sub>2</sub> / mmBtu</b>	<b>kg CO<sub>2</sub> / scf</b>
Blast Furnace Gas	0.092 x 10 <sup>-3</sup>	274.32	0.025
Coke Oven Gas	0.599 x 10 <sup>-3</sup>	46.85	0.028
Propane Gas	2.516 x 10 <sup>-3</sup>	61.46	0.155
Fuel Gas <sup>2</sup>	1.388 x 10 <sup>-3</sup>	59.00	0.082
<b>Biomass Fuels - Solid</b>	<b>mmBtu / short ton</b>	<b>kg CO<sub>2</sub> /mmBtu</b>	<b>kg CO<sub>2</sub> / short ton</b>
Wood and Wood Residuals	15.38	93.80	1442.644
Agricultural Byproducts	8.25	118.17	974.903
Peat	8.00	111.84	894.720

Solid Byproducts	25.83	105.51	2725.323
<b>Biomass Fuels - Gaseous</b>	<b>mmBtu / scf</b>	<b>kg CO<sub>2</sub> / mmBtu</b>	<b>kg CO<sub>2</sub> / scf</b>
Biogas (Captured methane)	0.841 x 10 <sup>-3</sup>	52.07	0.044
<b>Biomass Fuels - Liquid</b>	<b>mmBtu / gallon</b>	<b>kg CO<sub>2</sub> / mmBtu</b>	<b>kg CO<sub>2</sub> / gallon</b>
Ethanol	0.084	68.44	5.749
Biodiesel	0.128	73.84	9.452
Rendered Animal Fat	0.125	71.06	8.883
Vegetable Oil	0.120	81.55	9.786

**Table A.2 Emissions & Generation Resource Integrated Database (eGRID) Table**

eGRID subregion acronym	eGRID subregion name	Annual output emission rates	
		(lb CO <sub>2</sub> /MWh)	(metric ton CO <sub>2</sub> /MWh)*
AKGD	ASCC Alaska Grid	1,280.86	0.633
AKMS	ASCC Miscellaneous	521.26	0.257
AZNM	WECC Southwest	1,191.35	0.588
CAMX	WECC California	658.68	0.325
ERCT	ERCOT All	1,181.73	0.584
FRCC	FRCC All	1,176.61	0.581
HIMS	HICC Miscellaneous	1,351.66	0.668
HIOA	HICC Oahu	1,593.35	0.787
MORE	MRO East	1,591.65	0.786
MROW	MRO West	1,628.60	0.804
NEWE	NPCC New England	728.41	0.360
NWPP	WECC Northwest	819.21	0.405
NYCW	NPCC NYC/Westchester	610.67	0.302
NYLI	NPCC Long Island	1,347.99	0.666
NYUP	NPCC Upstate NY	497.92	0.246
RFCE	RFC East	947.42	0.468
RFCM	RFC Michigan	1,659.46	0.820
RFCW	RFC West	1,520.59	0.751
RMPA	WECC Rockies	1,824.51	0.901
SPNO	SPP North	1,815.76	0.897
SPSO	SPP South	1,599.02	0.790
SRMV	SERC Mississippi Valley	1,002.41	0.495
SRMW	SERC Midwest	1,749.75	0.864
SRSO	SERC South	1,325.68	0.655
SRTV	SERC Tennessee Valley	1,357.71	0.671
SRVC	SERC Virginia/Carolina	1,035.87	0.512
<b>U.S.</b>		<b>1,216.18</b>	<b>0.601</b>

\*Converted from lbs CO<sub>2</sub>/MWh to metric tons CO<sub>2</sub>/MWh using using conversion factor 1 metric ton = 2,204.62lbs.



## Appendix B. Device Destruction Efficiencies – Quantification Methodology

**Table B.1 Default Destruction Efficiencies by Destruction Device**

Biogas Destruction Device	Biogas Destruction Efficiency (BDE)
Open Flare	0.96
Enclosed Flare	0.995
Lean-burn Internal Combustion Engine	0.936
Rich-burn Internal Combustion Engine	0.995
Boiler	0.98
Microturbine or large gas turbine	0.995
Upgrade and use of gas as CNG/LNG fuel	0.95
Upgrade and injection into natural gas transmission and distribution pipeline	0.98

### Equation B.1: Calculating Heat Generation Emission Factor

$$CEF_{heat} = \frac{CEF_{CO_2,i}}{Eff_{heat}} \times \frac{44}{12}$$

Where,

$CEF_{heat}$  = CO<sub>2</sub> emission factor for heat generation 12

$CEF_{CO_2,i}$  = CO<sub>2</sub> emission factor of fuel used in heat generation (see table B.1)

$Eff_{heat}$  = Boiler efficiency of the heat generation (either measured efficiency, manufacturer nameplate data for efficiency, or 100%)

$\frac{44}{12}$  = Carbon to carbon dioxide conversion factor

## **Appendix C. Data Substitution Methodology – Quantification Methodology**

- (a) ARB expects that MMC projects will have continuous, uninterrupted data for the entire reporting period. However, ARB recognizes that unexpected events or occurrences may result in brief data gaps.
- (b) This appendix provides a quantification methodology to be applied to the calculation of GHG emission reductions for MMC projects when data integrity has been compromised due to missing data points.
- (c) This methodology is only applicable to gas flow metering and methane concentration parameters. Data substitution is not allowed for equipment that monitors the proper functioning of destruction devices such as thermocouples.
- (d) The following data substitution methodology may be used only for flow and methane concentration data gaps that are discrete, limited, non-chronic, and due to unforeseen circumstances.
- (e) Data substitution is not allowed for data used to calculate mine specific hyperbolic decline curve coefficients for an abandoned underground mine methane recovery activity.
- (f) Data substitution can only be applied to methane concentration *or* flow readings, but not both simultaneously. If data is missing for both parameters, no reductions can be credited.
- (g) Substitution may only occur when two other monitored parameters corroborate proper functioning of the destruction device and system operation within normal ranges. These two parameters must be demonstrated as follows:
  - (1) Proper functioning can be evidenced by thermocouple readings for flares or engines, energy output for engines, etc.
  - (2) For methane concentration substitution, flow rates during the data gap must be consistent with normal operation.
  - (3) For flow substitution, methane concentration rates during the data gap must be consistent with normal operations.
- (h) If corroborating parameters fail to demonstrate any of these requirements, no substitution may be employed. If the requirements above can be met, the following substitution methodology may be applied:

Duration of Missing Data	Substitution Methodology
Less than six hours	Use the average of the four hours immediately before and following the outage
Six to 24 hours	Use the 90% lower confidence limit of the 24 hours prior to and after the outage
One to seven days	Use the 95% lower confidence limit of the 72 hours prior to and after the outage
Greater than one week	No data may be substituted and no credits may be generated